

### Physical Development this Half Term

PE will be on a **Wednesday**. Please make sure your child comes to school in their Nine Acres PE kit on a Wednesday every week and has a water bottle with them. This half term the children will be exploring dance and movement.

### REWV this Half Term

This half term will be looking into the concept of 'remembering'. We will consider lots of different ways to remember special people and big events. We will compare Christian and Jewish remembrance celebrations.

### How can you help at home?

**Reading** - Please read at home with your child at least 3 times a week. Please remember to log all reads on the BoomReader app.

**Maths** - Counting in 2s. Remember to practise your number facts to get your badges (number bonds to 10, doubles and near doubles).

**Homework** - Homework will be given out on a Thursday and is due in the following Monday.

## Dates for your Diary

### JANUARY 2026

**Mon 5th January 2026** - First day of Spring Term 1 2026.

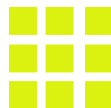
### FEBRUARY 2026

**Thurs 12th Feb 2026** - Helping Hands Valentine's Disco.

**Mon 16th Feb - Fri 20th Feb 2026** - February Half Term.

**Mon 23rd Feb 2026** - DEVELOPMENT DAY.

**Tues 24th Feb 2026** - First day of Spring Term 2.



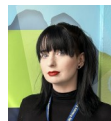
Miss Clark



Mrs Gosset



Miss Gardiner



Miss Chandler



**Year 1  
Team  
Spring  
Term 1  
2026**

**YEAR 1 KNOWLEDGE ORGANISER**

**Dear Families,**

We hope you had a wonderful Christmas and New Year!

This half term we will be learning all about 'Toys' in History. We will explore old toys and will be looking at how toys have changed over time. There will be opportunities for children to bring in toys from home to show their friends; keep an eye out for text messages with further information about this!

In English, we will be exploring different traditional tales and fairy tales. We will use adjectives to describe characters and settings and will also get into the role of different characters!

**With thanks,**

**The Year 1 Team**

**'Striving for Excellence'**



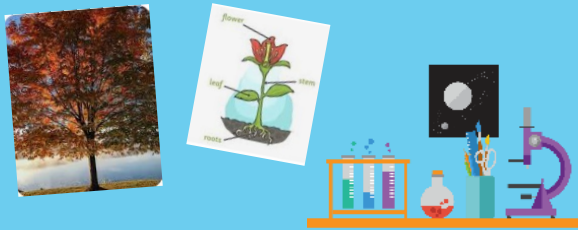
# Year 1 Knowledge Organiser - Spring Term 1 2026

## Science

This half term we will be exploring plants, with a focus on our local environment. We will be looking at types of common plants and trees.

Do you know the difference between an evergreen and deciduous tree?

Can you go on a plant hunt?



## Computing

In Computing we will be exploring early programming concepts.

We will use and identify commands

to move a floor robot and start to predict the outcome of programs. Also we will be introducing the early stages of program design through the use of algorithms.



## PSHE

This half term our topic is 'friendships.'

Over this half term we will discuss what makes a good friend and how it's OK to have to be similarities and differences. We will look at what respectful means and valuing our differences.

Throughout the term we will continue to talk about keeping ourselves safe, and who we can talk to if we have a worry or concern.

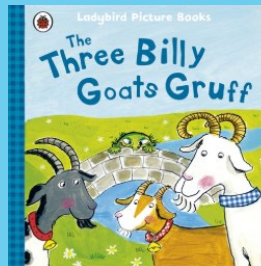


## Our English this half term!

In English this half term we will be exploring a range of traditional tales and fairy tales. We will be using adjectives to describe settings and characters and will also use some drama to get into the role of some characters.

What's your favourite fairy tale?

## This term's exciting books!



## Our Maths this half term!

Place value! We will be exploring numbers up to 20 and partitioning them into tens and ones. We will also be looking at addition and subtraction within numbers to 20.

