



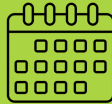
**ISSUE 14**  
**19/12/2025**

# NINE ACRES NEWS

Articulate,  
Passionate, Persuasive & Positively  
influencing the world around us.



## KEY DATES



### DECEMBER 2025

**Mon 22nd Dec - Fri 2nd Jan 2026 - Christmas Holidays.**

### JANUARY 2026

**Mon 5th Jan 2026** - First day of Spring Term 1.

**Thurs 22nd January 2026** - EYFS Amazon World Visit.

**Thurs 29th January 2026** - Year 2 Spinnaker Tower Visit.

### FEBRUARY 2026

**Tues 3rd Feb 2026** - Year 4 Winchester Science Centre Visit.

**Mon 16th Feb - Fri 20th Feb 2026 - February Half Term.**

**Mon 23rd Feb 2026 - DEVELOPMENT DAY.**

**Tues 24th Feb 2026** - First day of Spring Term 2.

### MARCH 2026

**Thurs 10th March 2026** - Year 3 Butser Ancient Farm Visit.

**Friday 27th March 2026** - Early closing at 1.00pm.

**Mon 30th March - Fri 10th April 2026 - Easter Holidays.**

### APRIL 2026

**Mon 13th April 2026** - First day of Summer Term 1.

**Thurs 23rd April 2026** - Year 2 Roald Dahl Visit.

**Tues 28th April 2026** - Year 5 Ventnor Botanic Gardens Visit.

### MAY 2026

**Mon 4th May 2026** - BANK HOLIDAY School closed to pupils.

**Mon 25th May - Fri 29th May 2026 - May Half Term.**

### JUNE 2026

**Mon 1st June 2026** - First day of Summer Term 2.

**Friday 19th June 2026 - DEVELOPMENT DAY.**

**Wed 24th-Thurs 25th June 2026** - Year 6 Leavers Trip.

### JULY 2026

**Friday 24th July 2026** - Last day of term.

**Mon 27th July 2026 - DEVELOPMENT DAY.**

**Tues 28th July - Monday 31st August 2026 - Summer Holiday's.**

### Dear Families,

As we come to the end of the Autumn term and head towards the end of 2025, I would like to personally thank every member of our school community for the support, kindness and commitment you have shown throughout the year. Working together in partnership is what makes our school such a special place. I would like to take this opportunity to look back on 2025 and celebrate the many successes of our community. There have been so many moments of learning, growth and achievement all made possible through the dedication of our staff, the support of our families and of course - the determination of our children.

As we look ahead to the new year, we do so with excitement for the learning, opportunities and experiences it will bring. I am confident that, together, we will continue to build on our successes and support every child to thrive.

I would like to offer a very special 'Thank you' to our children. Your hard work, resilience and positive attitudes have made us incredibly proud this year. You inspire us every day!

I wish every member of our community a restful and well-deserved winter break. I look forward to welcoming everyone back in the new year for another exciting term of learning.

**Warmest Christmas Wishes,**  
**Miss McDonald**

2026



## HOUSE POINTS



243



256



267



251



**WELL DONE TO:**  
**BLUE HOUSE**



**01983 522984**



**[www.nineacrespri.co.uk](http://www.nineacrespri.co.uk)**



**[office@nineacrespri.co.uk](mailto:office@nineacrespri.co.uk)**

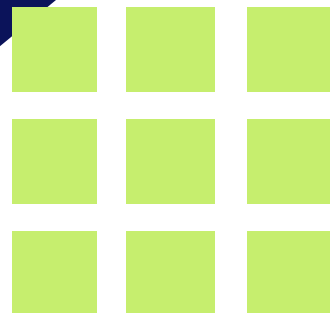


**FACEBOOK**

**@NINEACRESPRIMARYSCHOOL**

**Striving For Excellence**

# THIS WEEK'S AWARDS



# ARRIVE  
AND  
STRIVE!



## ATTENDANCE

### WHOLE SCHOOL ATTENDANCE TARGET:



WHOLE SCHOOL ATTENDANCE  
THIS WEEK IS: **93.75%**

THIS WEEKS WINNING CLASS:  
WELL DONE **DURHAM!**

### CLASS ATTENDANCE

DATES - 12/12/2025 - 18/12/2025

<u>CLASS</u>	<u>ATTENDANCE</u>	<u>LATES</u>
CARISBROOKE:	88.26%	1
YARMOUTH:	91.67%	1
BIGGLESWADE:	95.67%	0
CORFE:	97.33%	0
BALMORAL:	93.67%	1
WINDSOR:	96.00%	1
ARUNDEL:	94.00%	0
BAMBURGH:	95.33%	0
KENDAL:	94.33%	0
WARWICK:	93.00%	1
EDINBURGH:	91.38%	1
STIRLING:	90.27%	2
DURHAM:	98.97%	1
YORK:	92.67%	2

GOOD ATTENDANCE ENSURES  
THAT CHILDREN CAN DEVELOP AT  
THE RIGHT PACE, GAIN  
CONFIDENCE AS THEY MAKE  
PROGRESS, AND ULTIMATELY  
ENJOY SCHOOL AS THEY SEE  
THEMSELVES SUCCEED



## READING



SCHOOL ID:  
**59721**

WELL DONE TO:  
**WINDSOR &  
BAMBURGH CLASSES**

## WORD OF THE WEEK



**SLEIGH**



an open, usually horse-drawn vehicle with runners  
for use on snow or ice.

Striving For Excellence

# THIS WEEK'S AWARDS



#Striving  
For  
Excellence

## SCHOOL VALUE AWARD WINNERS

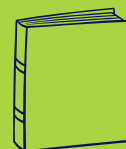


**# ARTICULATE # PASSIONATE # PERSUASIVE  
# POSITIVELY INFLUENCING THE WORLD AROUND US**

## HALF TERM SUBJECT FOCUS: MATHS AWARD



**Congratulations to all our Maths Award winners this term, we are very proud of all our champs.**  
Next term, as the 'Year of Reading' begins we will be celebrating our Young Authors in the newsletter each week.  
We can't wait to see who will feature each week as our winners!



# IN OTHER NEWS...



## MENU

THIS WEEK WE ARE ON: WEEK TWO

AUTUMN/WINTER 2025 MENU		WEEK 2				
		H/T: 18/11/2025, 01/12/2025, 05/01/2026, 26/01/2026, 23/02/2026, 16/03/2026				
		MONDAY	TUESDAY	WEDNESDAY	THURSDAY	FRIDAY
HOT DISHES	OPTION 1	The menu for Monday 5th January 2026 will be: <b>RED</b> Cheese & Tomato Pizza or <b>GREEN</b> Veggie Burrito with Wholegrain Rice.	Pork Sausages with Mashed Potatoes and Gravy	Roast Chicken with Roast Potatoes and Gravy	The menu for Thursday 8th January 2026 will be: <b>RED</b> Chicken & Vegetable Korma or <b>GREEN</b> Macaroni Cheese	Battered Fish with Chips
	OPTION 2		OR Vegetarian Sausage with Mashed Potatoes and Gravy	OR Sweet Potato, Chickpea and Herb Roast with Roast Potatoes and Gravy		OR Quorn Dippers with Chips
	OPTION 3		OR Tomato Pasta Fresh, homemade Tomato Sauce with Penne Pasta	OR Tomato Pasta Fresh, homemade Tomato Sauce with Penne Pasta		OR Tomato Pasta Fresh, homemade Tomato Sauce with Penne Pasta
HOT DISHES ARE SERVED WITH TWO VEGETABLES AND FRESHLY BAKED BREAD						
DESSERT		Chocolate Caramel Crunch	Banana Flapjack	Chocolate Brownie	Raspberry Jelly	Strawberry Ice Cream

**BAKED POTATOES SERVED DAILY**  
With a choice of toppings 🍌🧀

**AVAILABLE DAILY**  
Fresh fruit, salad, yoghurt and water

Chartwells  
SCHOOLS

Our menu is subject to change. Please be assured that all notified medical diets and allergy requirements will be safely catered for

## EDUCATIONAL VISITS

### EDUCATIONAL VISIT DATES

**Wednesday 1<sup>st</sup> October 2025** - Year 1 Osborne House Visit  
**Tuesday 14<sup>th</sup> October 2025** - Year 6 Milestones Museum Visit.  
**Wednesday 26<sup>th</sup> November 2025** - Year 5 London Visit.  
**Thursday 4<sup>th</sup> December 2025** - Year 1 Mayflower Studios Visit.  
**Thursday 22<sup>nd</sup> January 2026** - EYFS Amazon World Visit.  
**Thursday 29<sup>th</sup> January 2026** - Year 2 Spinnaker Tower Visit.  
**Tuesday 3<sup>rd</sup> February 2026** - Year 4 Winchester Science Centre Visit.  
**Tuesday 10<sup>th</sup> March 2026** - Year 3 Butser Ancient Farm Visit.  
**Thursday 23<sup>rd</sup> April 2026** - Year 2 Roald Dahl Museum & Story Centre Visit.  
**Tuesday 28<sup>th</sup> April 2026** - Year 5 Ventnor Botanic Gardens Visit.  
**Thursday 7<sup>th</sup> May 2026** - Year 1 Marwell Zoo Visit.  
**Wednesday 24<sup>th</sup> June-Thursday 25<sup>th</sup> June 2026** - Year 6 Leavers Visit.  
**June 2026** - Year 5 Sailing at RYVC, Seaview.  
**Tuesday 30<sup>th</sup> June 2026** - EYFS Bembridge Beach Visit.

More Educational Visits will be added to the list, so please keep checking.

Please return the permission forms to the office as soon as possible and ensure deposits and full payments are made on time using ParentPay. Barcode letters to make payments via a PayPoint site in a local shop are available by request at the school office.

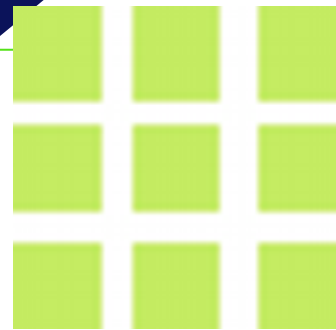


**WINCHESTER  
SCIENCE CENTRE  
AND PLANETARIUM**





# IN OTHER NEWS...



## OFFICE NEWS

### Development Days

**Monday 1st Sept 2025** - DEVELOPMENT DAY  
**Monday 23rd Feb 2026** - DEVELOPMENT DAY  
**Friday 19th June 2026** - DEVELOPMENT DAY  
**Monday 27th July 2026** - DEVELOPMENT DAY

We have 1 more development day to take during the 2025-2026 academic year.



### School Dinner Menu Swap - 5<sup>th</sup> & 6<sup>th</sup> January 2026

We return in January on Week 2 of the Dinner Menu.

The menu for **Monday 5<sup>th</sup> January 2026** will be: **RED** Cheese & Tomato Pizza or **GREEN** Veggie Burrito with Wholegrain Rice.  
 The menu for **Thursday 8<sup>th</sup> January 2026** will be: **RED** Chicken & Vegetable Korma or **GREEN** Macaroni Cheese.



Jacket Potatoes & Tomato Pasta is available too.

### Contact Details

Have you moved house or updated your contact details recently?

Please update the school office with any new mobile numbers and addresses.

**It is important that we have the correct details on record in case of an emergency.**



### PE Days

PE Days for Spring Term will remain the same as Autumn Term.

Days as follows:

**EYFS** - Tuesday  
**Year 1** - Wednesday  
**Year 2** - Monday  
**Year 3** - Thursday  
**Year 4** - Tuesday  
**Year 5** - Monday  
**Year 6** - Friday

Please ensure your child has a Nine Acres PE kit and sensible footwear for PE lessons. Please ensure your child has a water bottle in school everyday. Please remove all earrings before your child comes to school and ensure that long hair is tied up.



### Spring Term Start Date

We return to school after the Christmas holidays on **Monday 5<sup>th</sup> January 2026**.



### Year 6 Booster Sessions

The Year 6 Boosters will continue after the Christmas Holidays. The Boosters will run from **Tuesday 6<sup>th</sup> January** through to May 2026. Boosters finish at 4.10pm, if your child is signed up for the Sports session after Boosters this will end at 5.00pm.



### Forest Schools

Children in Year 4 will begin Forest Schools on **Wednesday 7<sup>th</sup> January 2026**. All children will need to come to school wearing suitable warm outdoor clothing, sensible footwear and bring a change of outdoor footwear and a waterproof coat.



### Reporting Absence

A gentle reminder that if your child is absent from school for any reason, you must contact the school office by 9.00am at the latest to notify us. If we do not hear from you, your child's absence will be recorded as unauthorised. Contact to the school office is to be made every day of absence.

**Thank you for your co-operation.**

## COMMUNITY NEWS

**Squirrels BEAVERS cubs SCOUTS EXPLORERS**

### Less Bored More Reward

Aged between 4 and 18? Looking for new adventures, fun and friends?

From crate stacking and climbing to hiking and abseiling, no two weeks are the same.

Sound rewarding? Start your new adventure.

Get involved  
[scouts.org.uk/groups](https://scouts.org.uk/groups)



### Christmas Drive-in Cinema 2025

Robin Hill Country Park

Friday 12 December: The Happiest Christmas Carol | 6.30pm  
 Saturday 13 December: Elf | Midday, Home Alone | 3pm, Love Actually | 7pm  
 Sunday 14 December: The Polar Express | Midday, How The Grinch Stole Christmas | 3pm, The Holiday | 7pm

Book now  
 Scan the QR code or visit: [www.scoutscinema.org.uk/](https://www.scoutscinema.org.uk/)  
 Cinema2025



**iwstoryfestival.com**

**NO BATTERIES REQUIRED**  
 Gift-giving problems solved

Book your book signed at the Festival

Get this NATIONAL YEAR OF READING gift to a GREAT START with the 30 STORY

Available from Middles B&B Books, 100% handmade, sustainable, gift-giving, reusable.

iwstoryfestival.com

**SANDOWN SOCCER**  
 At The Bay CE Secondary

**FOR CHILDREN AGED 5-11**  
**22<sup>nd</sup> and 23<sup>rd</sup> December**

Mini-Soccer camp for children. Aiming to provide a fun and enjoyable environment whilst developing and improving players' footballing ability!

10AM - 3PM

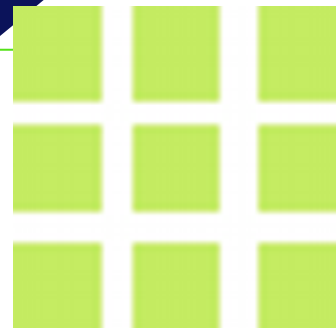
FA Qualified coaches with enhanced DBS and up to date first aid and safeguarding training.

Fun football games to develop agility, balance, coordination and speed!

Take part in the Sandown Soccer World Cup where you can win a chance to become a CHAMPION!

Text your child's name and year group to 07994389531 to secure your place today!

# IN OTHER NEWS...



## HELPING HANDS PTA

### Diary Dates

Helping Hands Annual General Meeting - Tuesday 13th January 2026



#### Christmas Fayre

Thank you to everyone who came along and made the Christmas Market such a fun event. Particularly enormous thank yous go to the amazing Helping Hands team, who have been planning and preparing this event for months, the fabulous staff who all gave so much energy and time to make the day go smoothly and finally our generous community (families and local businesses) who donated such a wonderful selection of things for our raffle, cafe and tombolas. Wow!

#### Annual General Meeting

We would like to give notice of the AGM of Nine Acres Community Primary School PTA, known as "Helping Hands", to be held on Tuesday 13<sup>th</sup> January 2026. The PTA Annual General Meeting will start at 8.45am, in the school hall and should last for roughly half an hour.

The PTA plays a vital part in the school community and all parents, as members of the PTA, are invited to support the AGM. This is your chance to hear and see how the funds you have helped to raise have been used for the benefit of the children at our school.

The AGM is also an opportunity for you to elect the PTA Committee, who represent the association throughout the forthcoming year.

Nominations should be sent in advance of the AGM for anyone wishing to stand as an Officer or Ordinary Committee Member, for the first time. Existing committee members wishing to stand for re-election do not have to be nominated again but should inform the PTA of their intention to stay in their role.

If you would like any further information about being a Committee Member, please speak to Clare Sim or contact [helpinghands@nineacrespri.co.uk](mailto:helpinghands@nineacrespri.co.uk)

We hope you all have a very Merry Christmas and look forward to seeing you in 2026! Our next meeting will be on **Tuesday 6th January, 8.45am**, meeting in the foyer. If you would like to know more, please contact us via email on [helpinghands@nineacrespri.co.uk](mailto:helpinghands@nineacrespri.co.uk) or leave a message for us at the school office.

*We look forward to seeing you soon!*  
Helping Hands

## ENRICHMENT CLUBS

### Enrichment Clubs News

The Spring Term Enrichment Club form has been sent by email and allocations have now been made. Texts have been sent to confirm your child's places and payments should have been made on ParentPay. We still have spaces available in the clubs below so if your child wishes to attend a club, please email [enrichmentclubs@nineacrespri.co.uk](mailto:enrichmentclubs@nineacrespri.co.uk) to book places.



**Monday**  
Years 1-6 Huxley's Allsorts

**Tuesday**  
Years 3/4/5 Chess Club  
Years 3/4/5 Dodgeball Club  
Years 3/4/5 Diamond Art Club

**Wednesday**  
KS1 Cricket Club  
KS2 Cricket Club

**Thursday**  
Years 1-3 Llama Drama Club  
Year 4-6 Llama Drama Club



Our Enrichment Club Programme for Spring Term 2026 will begin on **Monday 5th January 2026**. The programme is open to all children from Year 1 to Year 6.

There will be no clubs running on **Monday 23rd February 2026** due to a School Development Day.

There will be no clubs running on **Thursday 12th February 2026** due to the Valentine's Disco.

There will be no clubs running on **Friday 28th March 2026** due to Early closing at 1.00pm.

