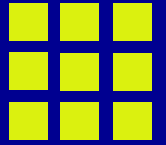


NINE ACRES NEWS

'Striving for Excellence'

Friday 15th November 2024



Nine Acres Community Primary School, South View, Newport, Isle of Wight, PO30 1QP
www.nineacrespri.iow.sch.uk 01983 522984 Head teacher: Mrs E. Dyer BA Hons QTS, NPOH



Dear Nine Acres Families,

Today, we came together to support Children in Need, and we are immensely grateful for all your donations. We're so proud of our penny Pudsey, and we will be gathering all the pennies to send to the charity. Well done #TeamNineAcres!



So far, 358 out of 414 children are in the running for our Attendance Focus Fortnight Prize draw! All these children have achieved a perfect 100% attendance this week! Keep up the fantastic effort, everyone!

Next Wednesday, we'll be holding our very first Nine Acres Poetry Slam 2024! Thank you for helping your child learn their class poem. There is still time for some more practice this weekend! The event will take place during the school day, and each class will have a turn to perform to a small audience of their friends. There are prizes for the best class, so let's cheer them on!



A reminder to sign up for your Parents' Evening slot - your children are excited to showcase their amazing progress and share how they are 'Striving for Excellence' with your support!

Have a lovely weekend,
Mrs Dyer



Parents' Evenings - 25th & 27th Nov 2024

The sign up sheets are available in the foyer for Parents' Evenings on Monday 25th November and Wednesday 27th November 2024. Please do sign up for Parents' Evening so we can celebrate your child's achievements.

Development Days

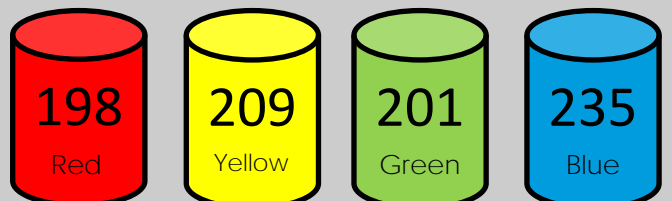
- Monday 2nd September 2024 - DEVELOPMENT DAY
- Friday 20th June 2025 - DEVELOPMENT DAY
- Friday 4th July 2025 - DEVELOPMENT DAY
- Monday 28th July 2025 - DEVELOPMENT DAY
- Tuesday 29th July 2025 - DEVELOPMENT DAY



House Points Totals

Well done to **BLUE** house who received the most House Points for this week!

CONGRATULATIONS !!!



Diary Dates 2024/2025



NOVEMBER 2024

Fri 22nd Nov 2024 - Year 4 & 5 Cinema Trip.
Mon 25th & Wed 27th Nov 2024 - Parents' Evening.
Wed 27th Nov 2024 - Years 1 & 2 Cinema Trip.
Thurs 28th Nov 2024 - Year 3 & 6 Cinema Trip.

DECEMBER 2024

Wed 4th Dec 2024 - Year 4 Winchester Science Centre Trip.
NEW Fri 6th Dec 2024 - Christmas Fayre Mufti Day.
Tues 10th Dec 2024 - FLU Immunisations.
Fri 13th Dec 2024 - Christmas Fayre.
Tues 17th Dec 2024 - EYFS Nativity PM.
Wed 18th Dec 2024 - EYFS Nativity AM.
Wed 18th Dec 2024 - KS1 Nativity PM.
Thurs 19th Dec 2024 - KS1 Nativity AM.
Thurs 19th Dec 2024 - Christmas Dinner Day.
Thurs 19th Dec 2024 - Christmas Jumper Day.
Fri 20th Dec 2024 - Early closing at 1.00pm.
Mon 23rd Dec - Fri 3rd Jan 2025 - **CHRISTMAS HOLIDAYS.**

JANUARY 2025

Mon 6th Jan 2025 - First day of Spring Term.
Thurs 9th Jan 2025 - Year 2 Spinnaker Tower Trip.

FEBRUARY 2025

Thurs 6th Feb 2025 - EYFS Amazon World Trip.
Thurs 7th Feb 2025 - Year 1 Winchester Theatre Trip.
Mon 17th Feb - Fri 21st Feb 2025 - **FEBRUARY HALF TERM.**

Wed 26th Feb 2025 - Year 5 London Trip.

MARCH 2025

Mon 3rd March 2025 - Parents' Evening.
Wed 5th March 2025 - Parents' Evening.
Thurs 6th March 2025 - WORLD BOOK DAY.

APRIL 2025

Fri 4th April 2025 - Early closing at 1.00pm
Mon 7th April - Friday 18th April 2025 - **EASTER HOLIDAYS.**
Fri 18th April 2025 - Good Friday.
Mon 21st April 2025 - Bank Holiday - School closed to pupils.
Thurs 24th April 2025 - Year 2 Roald Dahl Trip.

MAY 2025

Mon 5th May 2025 - Bank Holiday - School closed to pupils.
NEW Thurs 8th May 2025 - Year 1 Marwell Zoo Trip.
Mon 12th May 2025 - KS2 SATS WEEK.
Mon 19th May 2025 - KS1 SATS WEEK.

Diary Dates 2024/2025 Continued

MAY 2025

Mon 26th - Fri 30th May 2025 - **MAY HALF TERM.**

JUNE 2025

Week Commencing 2nd June 2025 - Year 4 Multiplication Check.
Thurs 19th June 2025 - Summer Fayre.
Fri 20th June 2025 - **DEVELOPMENT DAY.**
Wed 25th June 2025 - KS2 Sports Day.
Thurs 26th June 2025 - EYFS & KS1 Sports Day.
Thurs 26th & Fri 27th June 2025 - Year 6 Leavers Trip.

JULY 2025

Fri 4th July 2025 - **DEVELOPMENT DAY.**
Fri 25th July 2025 - Early Closing at 1.00pm.
Mon 28th July 2025 - **DEVELOPMENT DAY.**
Tues 29th July 2025 - **DEVELOPMENT DAY.**
Wed 30th July - Fri 29th August 2025 - **Summer Holidays.**

*New dates will be added - Please check the box for **NEW** to see any added dates.*

TAPNELL FARM & PARK

WINTER SEASON PASSES

Valid from 7 November 2024 - 21 March 2025

Transferable adult season pass when accompanying a child season pass holder

£30 PER PERSON

ALL WEATHER INDOOR & OUTDOOR PLAY!

- FUN EVENTS ALL YEAR!
- JUST £6 PER MONTH!
- UNDER 2'S AGE FREE!
- UNLIMITED FREE ENTRY*

Full details and to purchase (online only)
www.tapnellfarm.com/play

see website for full T&Cs



**JOIN US FOR
"ALICE IN WONDERLAND"
DRAMA FUN IN NEWPORT!**

This term, our Llama Drama group, Supernovas (those aged around 8-12 year olds), will be diving into the fantastical world of Alice in Wonderland!

We'll be working on a specially adapted, abridged version of Alice in Wonderland – each session will include drama games, role-play and character work, helping children build confidence, teamwork skills and a love for performance.

Whether your child is new to drama or already loves performing, they'll find a welcoming, supportive group here at Llama Drama. We're eager to get started and hope they'll join us on this magical journey!

You can book in for this term via:
llamadramainw.co.uk or
llama-drama-iow.classforkids.io

● 4.15-5.15pm
● Thursdays
● Nine Acres Primary School (open to all)
● £30 per term (only £5 per session!)



Get in Touch!

ALLY MAC
01983 655126
Llama Drama iOW
llamadramainw.co.uk
info@llamadramainw.co.uk

Our Mental Health Mission Statement

We believe having a mentally healthy community is not about being happy all the time, but about working together through the challenges and sharing the celebrations; feeling supported, heard, accepted, valued and empowered.

This week we want to focus on 'the importance of being active to improve mental health'.



<https://www.bbc.co.uk/teach/supermovers/pshe-super-mood-movers-wellbeing/zpxc3j6>


PE UNIFORM REMINDER

When you chose Nine Acres Primary for your child you also chose to adhere to the Nine Acres Uniform Policy including PE.

Therefore, a reminder:



- All children must wear the Nine Acres PE top.
- All children must have suitable trainers.
- PE Hoodies are for PE only.
- Children must have a Nine Acres jumper for other days.
- Children must have blue or Black jogging bottoms.

If you need any support in ensuring your child has the right uniform, we are here to help.



End of Day Procedures

If you have a message regarding your child or someone different to usual will be collecting your child at the end of the school day, please notify the school office by 2.30pm.


You can notify the office by popping in and speaking to a member of the office team, calling 522984 or by emailing office@nineacrespri.co.uk

Asda Cashpot

****How can you help?***

- ◆ Download the Asda Rewards app
- ◆ Select our school as your chosen beneficiary
- ◆ Shop in-store or online between **2nd September and 30th November 2024**

Let's spread the word and make a huge impact together - every shop brings us closer to more resources for our children!



NINE ACRES PRIMARY SCHOOL UNIFORM

Our Nine Acres Uniform is available from Kids and Co in Ryde. Please ensure your child has the correct uniform and PE kit and sensible black school shoes.

EYFS - Year 4

Autumn/Spring/Summer Term

School Logo White Polo Shirt
(Blue for EYFS only)
Navy Blue Jumper/Cardigan with School
Logo

Charcoal Grey Trousers or Grey Skirt
Grey or White Plain Ankle Socks
Black Sensible School Shoes - No Boots or
Fashion Shoes/Trainers

Summer Term

School Logo White Polo Shirt (Blue for
EYFS only)
Charcoal Grey Shorts or Skirt/Blue
Summer Dress
Grey or White Ankle Short Socks
Black Sensible School Shoes - No Boots or
Fashion Shoes/Trainers

Year 5 and Year 6

Autumn/Spring/Summer Term

Navy Blue Jumper/Cardigan with School
Logo
Plain White Shirt (Long or Short Sleeve)
School Tie

Charcoal Grey Trousers or Skirt
Grey or White Ankle Short Socks
Black Sensible School Shoes - No Boots
or Fashion Shoes/Trainers

Summer Term

Plain White Shirt (Short Sleeve)
School Tie
Charcoal Grey Shorts or Skirt
Grey or White Plain Short Socks
Black Sensible School Shoes - No Boots
or Fashion Shoes/Trainers

PE Kit (All Years)

Lime Green Logo Polo Shirt
Navy/Black Shorts
Trainers
White Plain Short Ankle Socks
Navy Blue or Black Tracksuit Bottoms
& a Navy hooded top for Sports
activities
Drawstring PE Bag



Word of the Week

Each week we share a word with you on our
newsletter.

Our word this week is '**independence**'.



Poppy Appeal 2024

Thank you for your kind
donations towards the
Poppy Appeal this year.
Our donation tins have
been collected and we
will know the amount we
raised soon. We will let
you know in due course.



#LestWeForget
#PoppyAppeal
#NineAcresPrimary
#RemembranceDay
#SupportOurHeroes

School Aged Immunisation Service



Your Child's
Flu Vaccine
is now due

School Session is on: 10/12/2024
School code is: 118164

Use this QR Code to say

YES or NO:

<https://bit.ly/3xANJMj>



You should have received information through the school
regarding the yearly flu vaccination. Please contact us for
more information or if you have any questions.

Contact us on:

Email IOW.SAI@solent.nhs.uk

Phone number 0300 123 5074



HELPING HANDS PTA

Dates for your calendar from Helping Hands
(Nine Acres Parent Teacher Association).



Diary Dates

- ◆ Asda Cashpot for Schools ends – Saturday 30th Nov 2024
- ◆ Christmas Fayre Mufti day - Friday 6th Dec 2024
- ◆ Christmas Fayre - Friday 13th Dec 2024



Asda Cashpot

Wow – our new total is £734.05! 2 weeks left – I wonder what our final total will be? Thank you for all your support in this.

Christmas Fayre and Mufti Day

On Friday 13th December, from 3.30 - 5:00pm it will be our Christmas Fayre and on the Friday before – FRIDAY 6th DECEMBER there will be a mufti day when the children will be allowed to wear their own clothes in exchange for donations for the Fayre.

Donations of the following would be gratefully received:

- ◆ EYFS, Years 1, 2 and 3 - Chocolate
- ◆ Years 4 – Cakes (homemade or shop bought welcome).

Please bring cakes on the day of the fayre (13/12/24) rather than on the mufti day.

- ◆ Years 5 and 6 - Decorate or fill a jar for the tombola.

Thank you for all your continued support.

Our next meeting will be on Friday 6th December, 8.45am, meeting in the foyer. If you would like to know more, please contact us via email on helpinghands@nineacrespri.co.uk or leave a message for us at the school office.

We look forward to seeing you soon!

Attendance Focus Fortnight!!

Our Attendance Focus Fortnight began on Monday 11th November and runs to Friday 22nd November, every child started with an amazing 100% attendance score.

The challenge?

Stay above our school target of 97% over the two weeks, and you could be in for a chance to win!

We have 10 fantastic Amazon vouchers up for grabs! Winners will be selected at random and celebrated during our special Attendance Celebration Assembly on Friday 22nd November.

Let's make it fun, let's make it count – show up, shine, and let's smash that attendance target!



Year 6 SATS

Information Sessions

As you will be aware, our Year 6 pupils will be completing the Government's National Curriculum Assessments (previously known as SATs) on the week beginning 12th May 2025.

We are offering an opportunity to attend an information session on Wednesday 4th December at either 3:30pm or 4:30pm.

Please see letter sent by email.

Boom Reader

Please continue to log your child's reading on the Boom Reader (Go Read) app. It is an expectation

that all children in Year 1 to Year 6 should be reading at home at least 3 times a week.



Nine Acres Community Primary School

Spelling Champions of the week

Spelling Champion
in Bamburgh Class

Elliot

Spelling Champion in
Windsor Class

Jack

Spelling Champion in
Balmoral Class

Erin

"Spelling is the building block of communication - let's help our children build strong foundations!"

We encourage families to help their children practice basic spelling at home. Even words such as; like, with, the, was, and has, make a big difference! Checking their spellings in homework is a simple but powerful way to support their learning.

We need your help to ensure every child feels confident in their spelling skills!
Thank you for your continued support.

Autumn/Winter - School Dinner Menu

Chartwells		WEEK 3				
		MONDAY	TUESDAY	WEDNESDAY	THURSDAY	FRIDAY
AUTUMN/WINTER 2024	HOT SPECIALS	Cheese and Tomato Pizza @ Served with Potato Wedges	Pork Sausages Served with Roast Potatoes and Sling	Roast Chicken Served with Roast Potatoes and Sling	Chicken and Vegetable Korma @ Served with Wholesome Rice	Fish Fillets Served with Chips
	MEAT	BBQ Quorn Fillet @ Served with Wholesome Rice	Quorn Sausages Served with Roast Potatoes and Sling	Roasted Vegetable and Cranberry Slag @ Served with Roast Potatoes and Sling	Tomato and Sweetcorn Pasta @ @ @	Quorn Dippers @ Served with Chips
	VEG	Jacket Potatoes @ with a choice of hot and cold fillings	Jacket Potatoes @ with a choice of hot and cold fillings	Jacket Potatoes @ with a choice of hot and cold fillings	Jacket Potatoes @ with a choice of hot and cold fillings	Jacket Potatoes @ with a choice of hot and cold fillings
Jacket Potatoes are for Year 3 and above						
All main meals are served with help vegetables						
DESSERT		Chocolate Shortbread with Fruit @	Bread and Butter Pudding with Custard	Old Cookies with Fruit @	Lemon Shortbread	Vanilla Ice Cream
AVAILABLE EVERY DAY Vegetarian @ Dairy Free @ Halal @ Muslim Friendly @ Fruity @ Nutritional Choice @ Wholesome						

Week Commencing
Monday 18th
November 2024
Week 3

For children in Year 3
and above the
school dinner price is
£2.70 per meal.

The cost for a weeks
dinners is £13.50.



DINOSAUR ISLE MUSEUM

HOSTS

BLAST FROM THE PAST

A CELEBRATION OF

NATURAL HISTORY

ARCHAEOLOGY

HERITAGE

- ◆ Latest finds
- ◆ Fossil identification
- ◆ Refreshments available
- ◆ Children's activities
- ◆ Face painting

- ◆ Cowes Maritime Museum
- ◆ Dinosaur Expeditions
- ◆ IW Bus and Coach Museum
- ◆ IW Council Heritage Service
- ◆ IW Metal Detecting Club
- ◆ Dimbola Museum
- ◆ Dinosaur Isle Museum
- ◆ Museum of Island History
- ◆ Newport Roman Villa
- ◆ Wight Coast Fossils



Meet Natural History Museum fossil mammal expert Dr Jerry Hooker

- ◆ 10am to 4pm
- ◆ Saturday 16 November
- ◆ Sunday 17 November

- ◆ £1 per person
- ◆ Free parking
- ◆ Last admission 3pm

📍 Culver Parade, Sandown, PO36 8QA

🌐 dinosaurisle.com

☎ 01983 404344

📘 [dinosaurisle](https://www.facebook.com/dinosaurisle)



Isle of Wight
Council



Event
organised by
Isle of Wight
Heritage
Service

Educational Visits at Nine Acres



**WINCHESTER
SCIENCE CENTRE
AND PLANETARIUM**

Wednesday 4th
December 2025

Year 4 Winchester Science Centre and Planetarium Trip.

Deposit Payment was due Monday 18th November 2024

Full payment due by Friday 29th November 2024

Thursday 9th January 2025

Year 2 Spinnaker Tower Trip.

Deposit Payment was due Friday 11th October 2024

Full payment due by Mon 2nd December 2024



Thursday 6th February 2025

EYFS Amazon World Trip

Deposit Payment due Fri 15th November 2024

Full payment due by Monday 6th January 2025

Friday 7th February 2025

Year 1 Winchester Theatre Trip to see
'Room on the Broom'.

Deposit Payment due Friday 15th November 2024

Full payment due by Monday 6th January 2025



Wednesday 26th February 2025

Year 5 London Trip.

Deposit Payment due Monday 4th Nov 2024

Full payment due by Friday 7th February 2025



Thursday 24th April 2025

Year 2 Roald Dahl Trip.

Deposit Payment due Monday 6th Jan 2025

Full payment due by Monday 31st March 2025



Thursday 26th & Friday 27th June 2025

Year 6 Chessington Leavers Trip.

Deposit Payment due - Monday 4th November 2024

Full payment due by Monday 2nd June 2025



Please ensure deposits and full payments are made on time using ParentPay. Barcodes letters to pay via Paypoint in a local shop are available on request at the office.

Free Cinema

Trips for Years 1-6

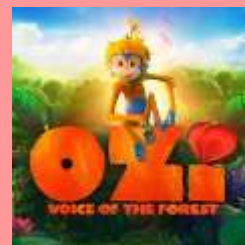
As part of National Schools Film Week we have secured films for Years 1-6 at the Cineworld Cinema in Newport.

Please see below for details of what your child will be watching and the date they will be attending.

All children will walk to the cinema on their chosen day and will need a waterproof coat for these trips.

Years 1 & 2 Cinema Trip

Wednesday
27th November
2024 to watch
Ozi - Voice of
the Forest.



Years 3 & 6 Cinema Trip

Thursday
28th
November
2024 to watch The
Wild
Robot.



Years 4 & 5 Cinema Trip

Friday 22nd
November
2024
to watch
Kensuke's
Kingdom.



New Carnival Presents

Merry & Bright Festival of Light

Lantern
Parade
6-7pm

Fri 6th Dec 5-8pm
RYDE TOWN

FREE

Entertainment
Music
Performance
Illuminations
Craft Market
Digital Graffiti
Games
Craft Activities



Supported using public funding by
ARTS COUNCIL
ENGLAND



Can you help us?

For our nativities this year, we are in need of 5 large straw bales. If you are able to help us, please pop into the office and speak with the team.



Labelling School Uniform

To help keep track of your children's belongings, please ensure all uniform items are clearly labelled with your child's name. This makes it so much easier to return lost items and reduces replacement costs. Thank you for your cooperation!

EYFS Phonics Sessions

Our EYFS Phonics sessions for families begin on Monday 18th November to Thursday 21st November 2024. Sign up sheets are in the office for booking places.

We look forward to seeing you!!

TAPNELL FARM PARK
THE ISLAND'S AWARD-WINNING CHRISTMAS EXPERIENCE

There's no time like the present

1st-24th DECEMBER
(on selected dates)

The clock is ticking to help save Christmas!

BUY TICKETS NOW!

www.tapnellfarm.com/christmas

EYFS TOURS for SEPTEMBER 2025

Class of 2025 is now open!!

Call or email now to book your 2025 tour!

01983 522984 or
office@nineacrespri.co.uk

Nine Acres School Car Park

Please do not use the school car park unless you have a Nine Acres School parking permit. We will continue to share the license plates in our newsletters and ask our community to also let us know if they see families using the car park without a school permit.

This is to support us in helping all our dedicated staff get to school on time to teach your children!

New parking permits are available from the school office for Chapel Street car park.

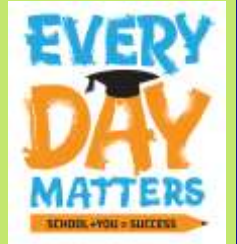
School Attendance

Whole school attendance target 97%.
Dates: 08/11/2024 - 14/11/2024

	Attendance	Lates
Carisbrooke	100%	1
Yarmouth	99.33%	1
Biggleswade	95.67%	3
Corfe	94.33%	0
Balmoral:	96.55%	0
Windsor:	96.96%	0
Arundel:	97.93%	0
Bamburgh:	98.00%	0
Kendal:	95.33%	0
Warwick:	96.67%	2
Edinburgh:	94.00%	0
Stirling:	92.00%	2
Durham:	89.33%	2
York:	99.33%	2

Well done CARISBROOKE!!
Whole school attendance this week is: **96.06%**

Good attendance ensures that children can develop at the right pace, gain confidence as they make progress, and ultimately enjoy school as they see themselves succeed.



ARE YOU ENTITLED TO FREE SCHOOL MEALS?

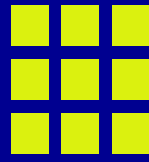
Have your circumstances changed? Could you now be entitled to Free School Meals?

To apply online please go to:
<http://www.iow.gov.uk/schools-and-education/schools/free-school-meals/>

FOODBANK VOUCHERS

Many families are struggling more than ever with rising household costs and we want to be able to support you however we can. We continue to provide our families with vouchers to the Island's Food Banks. If you would like some more information or are in need of a voucher, please speak to Mrs Hussey. Referrals can be made to any of the Island's Food Banks for your convenience or confidentiality. There are currently Food Banks in Newport, Freshwater, Cowes, Ryde and Shanklin.

PE DAYS



Nine Acres Primary School

Week Commencing 18th November 2024

All children should come to school in their Nine Acres PE kits on their allocated day.

PE Days for each Year Group

EYFS - Tuesday

Year 1 - Monday

Year 2 - Wednesday

Year 3 - Thursday

Year 4 - Tuesday

Year 5 - Friday

Year 6 - Monday

Please ensure your child has a warm PE Kit and sensible footwear for PE lessons. All sessions will be held outdoors.

Please ensure your child has a water bottle in school everyday.

Please remove earrings before your child comes to school and ensure that long hair is tied back.



ParentPay is our only method of making payments.

Are you signed up to ParentPay? We no longer accept cash at the office. All items that require payment will be available on

- School Dinners
- Enrichment Clubs
- School Trips



Please ensure your account is activated.

SCHOOL DETAILS

School Telephone
Number

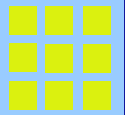
01983 522984

School Office Email

office@nineacrespri.co.uk

School Website

www.nineacrespri.iow.sch.uk



Medical Appointments & Leave of Absence Requests

If your child has a Drs/hospital/ dental appointment, please ensure you have notified the school office of the time and date and handed in a copy of the medical letter or appointment card to the school office.

Leave of absence request forms for are available upon request at the school office. These will only be authorised in exceptional circumstances.



Social Media

Do you follow us on Facebook? Scan the QR code to see our page!!



We are a Nut Free School!

Please may we remind you that Nine Acres is a nut free school. Nuts and nut products should not be brought into school. Please also refrain from bringing in sesame too.

