

Our PE this Half Term

PE will continue on Thursday afternoons for Year 3. Please ensure children continue to wear their Nine Acres PE kits (suitable to the colder weather) in to school on **Thursdays**.

Our Religious Education and World Views this Half Term

Our RE focus this half term is around 'Good and Evil'. We will be learning about the Hindu festival of Holi and looking at how this term's concept impacts the world around us.

How can you help at home?

Reading - Please continue to read with your children and check their understanding of content by asking questions. Their Boom Reader should show they are reading at home **at least** 3 times each week. Please see a member of the team if you need help with this.

Maths - We are trying to earn our times tables badges. We will continue consolidating the 2x, 5x and 10x as we move on to the 3x tables. Please use any opportunity to practise these at home and let us know if you would like any practice sheets.

Homework - Children will receive homework on a Friday which is due in on Wednesdays. Please ensure they set aside time to complete this. It will consist of a range of different maths and literacy activities, as well as some new learning that we encourage children to research and try!

Dates for your Diary

Wed 22nd Jan 2025 - Flu Immunisation Catch up session.

Thurs 13th Feb 2025 - Valentine's Disco.

Fri 14th Feb 2025 - Valentine's Pop Up Shop.

Mon 17th Feb - Fri 21st Feb 2025 - FEBRUARY HALF TERM.

Mon 3rd March 2025 - Parents' Evening.

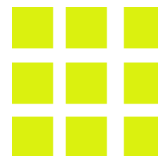
Wed 5th March 2025 - Parents' Evening.

Thurs 6th March 2025 - WORLD BOOK DAY.

Fri 4th April 2025 - Early closing at 1.00pm

Mon 7th April - Friday 18th April 2025 - EASTER HOLIDAYS.

Mon 21st April 2025 - Bank Holiday - School closed



Nine Acres Primary School Spring Term 1 2025

Year 3 Team

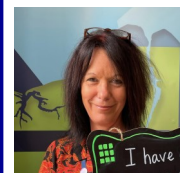
Mrs Lowe



Mrs Gould



Mrs Hewison



Mrs Barbour



Miss Johnson



Dear Families,

Welcome back to the Spring term 2025! It is another exciting term full of new learning for the children with a real focus on high quality presentation with their handwriting pens. We are also going to be having a big times table focus this half term - we want as many children as possible to have their 2x, 3x, 4x, 5x, 6x, 8x 10x 11x badges by the end of the school year. As always, if there is anything that we can do to help please just let us know.

With thanks,
Year 3 Team.



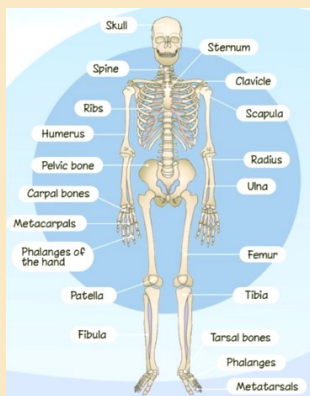
Knowledge Organiser
'Striving for Excellence'



Year 3 Knowledge Organiser - Spring Term 1 2025

Science

How is a human skeleton similar to the skeleton of other animals? This half term's learning is called 'Animals Including Humans'. We will be supporting our PSHE learning about what makes a healthy diet and learning about our skeleton and the function of different bones and muscles. We will be investigating how our skeleton changes over time and which vitamins are found in different foods.



Geography

In Geography this half term we will be learning about different settlements and land uses and putting it to action through fieldwork and a visit to Newport town centre!

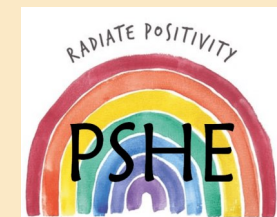


PSHE

The next focus in PSHE is about keeping ourselves safe. We will explore how to make choices to keep ourselves and others safe. We will also look at how medicines can be helpful and harmful. The children will explore the risks of alcohol, smoking and drugs and discuss the effects these can have on people.

Spring 1 Word Bank:

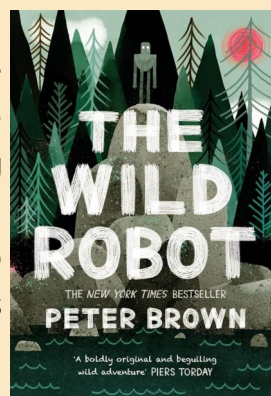
risk safety safe unsafe support
network safety healthy
safeguarding nerves cooperation
teamwork drugs alcohol cigarettes
medicine healthy lifestyle internet
safety consent online



Our English this half term!

After attending our exciting cinema visit last term, we will now be exploring the book 'The Wild Robot'. The children will unpick the environmental themes running through the book as well writing in character from various perspectives. The children will be expected to use inverted commas as a new punctuation skill this half term.

This term's exciting book!



Our Maths this half term!

Having secured the children's place value learning in the Autumn term, this half term we will continue to develop out skills in multiplication and division. We will then move on to applying these calculation skills through topics such as length and perimeter. Knowledge of number bonds and times tables will really help this learning so please keep up the home practice!

