

### Physical Development this Half Term

PE will take place on **Wednesdays this term**. As the sessions will be held outdoors, please ensure that your child comes to school wearing suitable warm clothing, which is the Nine Acres PE uniform.

### REWV this Half Term

This half term will be looking into the concept of 'welcoming'. We will be discussing when we can show ourselves to be welcoming to others and how it affects people's feelings. This will then link into our learning about Palm Sunday.

### How can you help at home?

**Reading** - Please read at home with your child at least 3 times a week. Please remember to log all reads on the BoomReader app.

**Maths** - Counting in 2s. Remember to practise your number facts to get your badges (number bonds to 10, doubles and near doubles).

**Homework** - Homework will be given out on a Thursday and is due in the following Monday.

## Dates for your Diary

### FEBRUARY 2026

**Mon 23rd Feb 2026 - DEVELOPMENT DAY.**

**Tues 24th Feb 2026** - First day of Spring Term 2.

### MARCH 2026

**Mon 2nd March 2026** - Parents' Evening.

**Wed 4th March 2026** - Parents' Evening.

**Thurs 5th March 2026** - World Book Day.

**Friday 27th March 2026** - Early closing at 1.00pm.

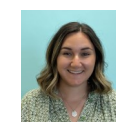
**Mon 30th March - Fri 10th April 2026 - Easter Holidays.**



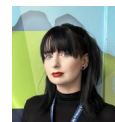
Miss Clark



Mrs Gosset



Miss Gardiner



Miss Chandler



**Year 1  
Team  
Spring  
Term 2  
2026**

**YEAR 1 KNOWLEDGE ORGANISER**

**Dear Families,**

We hope you had a relaxing half term! We are pleased to be back and get straight into our new learning.

This half term we will be focussing on fieldwork in Geography. We will be collecting and presenting data about our local park and around our school environment. Please discuss the routes that you take and talk about what you can see on these routes.

We are very much looking forward to another exciting half term and want to thank families for their engagement and support at home.

**With thanks,**

**The Year 1 Team**

**'Striving for Excellence'**



# Year 1 Knowledge Organiser - Spring Term 2 2026

## Our English this half term!

This half term we will be introducing a new text; Lost and Found by Oliver Jeffers.

We will become familiar with the story, then we will become authors! We will be writing short narratives based on Lost and Found, changing characters and settings.

Have you read any other stories by Oliver Jeffers?

## **This term's exciting book!**



## Geography

This term we will be carrying out fieldwork at our local park and around our school environment.

We will use different maps and plan our route to the park. We will collect data on the facilities at the park and think about how we could improve it.

When exploring our school environment, we will be collecting data on where we find plant life and think about how we can encourage more plant life around school.



## Science

We are continuing to explore plants this half term as different plant life starts to bloom around the school.

We will be looking at plants more in depth, with a particular focus on trees. We will explore deciduous and evergreen trees and match leaves to different types of trees.

We will be researching Anna Atkins and exploring why she is significant in Science.



## Our Maths this half term!

We will be counting and exploring numbers up to 50 this half term. We will be partitioning numbers into tens and ones and adding and subtracting.

We will also be exploring length, height, mass and volume.

### **Key Vocabulary:**

Tens, ones, partition, longer, shorter, longest, shortest, taller, shorter, tallest, shortest, heavier, lighter, full, half full, empty.



## Computing

This half term, we will be creating simple animations using Scratch Jr. We will be continuing to extend our knowledge of programs, sequences, testing and debugging, which we have explored when programming our floor robots.

