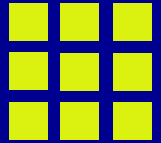


NINE ACRES NEWS

'Striving for Excellence'

Friday 5th November 2021



Nine Acres Community Primary School, South View, Newport, Isle of Wight, PO30 1QP
www.nineacrespri.iow.sch.uk 01983 522984 Head teacher: Mrs E. Dyer BA Hons QTS, NPOH



Dear Families of Nine Acres Primary School,

Welcome back for Autumn Term 2! It is set to be a very busy half term so I do urge families to ensure you read the newsletter, keep an eye out for text messages and letters home. Our 'Curriculum Knowledge Leaflets' will be coming home next week with your child so you can see what their focus is for this half term and how you can support them at home. Thank you to everyone who has logged on to 'GO Read' to record their child's reading. The children love celebrating their success and are very proud to show adults in school their reading charts and rewards. Please do let us know if you are having any issues with the new system as it is expected that all children and families should be using the app at this point.



As I write this newsletter, I am excited for the return of our Year 2 pupils from their adventures at the top of the Spinnaker Tower today! What a beautiful day to see the sights! I know many have been very brave and walked across the glass platform - what an experience!



We also welcomed 'The Royal Institute of Science' to school on Thursday who delivered awe inspiring workshops to our Year 1/2 and Year 5/6 pupils. They went with a bang!

As the weather is getting that much colder it is important that the children bring a named coat to school everyday please. They will need it at break and lunchtimes as they head out for fresh air. with their friends. In addition, we would welcome children to have a pair of navy tracksuit bottoms to wear in PE along with their Nine Acres logo hoodie to also keep them warm.

I must also take this opportunity to say a special THANK YOU to our friends at Newport Congregational Church I know many families have welcomed the donations of food items from soups, breakfasts, sauces and even the treats of chocolates that we have been able to pop out on the playgrounds. We really do value this support and care for our community members.

On this note, I have also received two emails this week regarding our 'AMAZING STAFF'. These two emails were both from our parent community asking that I pass on thanks to the dedicated staff members at the school for their time, support and inspiration. It really does mean a lot to us to receive such emails and I can assure you that these messages of thanks get passed on and celebrated by the whole team including the dedicated Governing Body.

A reminder that Friday 12th November is a Development Day and the school will be closed to pupils. The teaching staff will be continuing to develop and devise plans for our Nine Acres curriculum that is created for your children and their interests, As always we value your feedback on our curriculum (you can find this on our website) so do please let us know if your child is enjoying their specific learning in a particular subject area and anything you may be able to offer to help us enhance and enrich it even further!

Have a lovely weekend, Mrs Dyer



NINE ACRES COMMUNITY PRIMARY SCHOOL

Articulate Passionate Persuasive Positively influence the world around us

We are a GOOD school with an OUTSTANDING Early Years Provision



Come and see how learning extends beyond our school, where each child holds a real belief that they can achieve!

OPEN DAY, ANY DAY!

We are already taking bookings for individual tours of our unique school

Call now to book your exclusive tour
[01983 522984](tel:01983522984) www.nineacrespri.iow.sch.uk

Nine Acres Community Primary School

Explorer Awards



Corfe
Grace - PSHE



Kendal
Sookie - History



Biggleswade
Cayla - PSHE

Warwick
Matthew - History



Balmoral
Luca - History

Durham
Harry - History

Windsor



York
Kai - History & Arts

Arundel
Kiera - PSHE

Edinburgh
Alisha - History



Bamburgh
Keiran - History

Stirling
Harvey - History



Well done everyone!!

Isle of Wight School Terms and Holidays 2021 - 2022

Determined programme of school term and holiday dates for county and controlled schools for the academic year 2021/22

SEPTEMBER 2021	OCTOBER 2021	NOVEMBER 2021
M 6 13 20 27	M 4 11 18 25	M 1 [*] 8 15 22 29
T 31 [*] 7 14 21 28	T 5 12 19 26	T 2 9 16 23 30
W 1 8 15 22 29	W 6 13 20 27	W 3 10 17 24
T 2 9 16 23 30	T 7 14 21 28	T 4 11 18 25
F 3 10 17 24	F 1 8 15 [#] 22 29	F 5 12 19 26
S 4 11 18 25	S 2 9 16 23 30	S 6 13 20 27
S 5 12 19 26	S 3 10 17 24 31	S 7 14 21 28
DECEMBER 2021	JANUARY 2022	FEBRUARY 2022
M 6 13 20 27	M 3 10 17 24 31	M 7 14 21 28 [*]
T 7 14 21 28	T 4 [*] 11 18 25	T 1 8 15 22
W 1 8 15 22 [#] 29	W 5 12 19 26	W 2 9 16 23
T 2 9 16 23 30	T 6 13 20 27	T 3 10 17 24
F 3 10 17 24 31	F 7 14 21 28	F 4 11 18 [#] 25
S 4 11 18 25	S 1 8 15 22 29	S 5 12 19 26
S 5 12 19 26	S 2 9 16 23 30	S 6 13 20 27
MARCH 2022	APRIL 2022	MAY 2022
M 7 14 21 28	M 4 11 18 25 [*]	M 2 9 16 23 30
T 1 8 15 22 29	T 5 12 19 26	T 3 10 17 24 31
W 2 9 16 23 30	W 6 13 20 27	W 4 11 18 25
T 3 10 17 24 31	T 7 14 21 28	T 5 12 19 26
F 4 11 18 25	F 1 8 [#] 15 22 29	F 6 13 20 27 [#]
S 5 12 19 26	S 2 9 16 23 30	S 7 14 21 28
S 6 13 20 27	S 3 10 17 24	S 1 8 15 22 29
JUNE 2022	JULY 2022	AUGUST 2022
M 6 [*] 13 20 27	M 4 11 18 25	M 1 8 15 22 29
T 7 14 21 28	T 5 12 19 26	T 2 9 16 23 30
W 1 8 15 22 29	W 6 13 20 27	W 3 10 17 24 31
T 2 9 16 23 30	T 7 14 21 28	T 4 11 18 25
F 3 10 17 24	F 1 8 15 22 29	F 5 12 19 26
S 4 11 18 25	S 2 9 16 23 30	S 6 13 20 27
S 5 12 19 26	S 3 10 17 24 31	S 7 14 21 28



• STAY SAFE • BE KIND •

School Attendance

Whole school attendance target 96.00%.

Dates: 15/10/2021 - 04/11/2021

Attendance Lates

Carisbrooke:	98.66%	1
Yarmouth:	95.71%	1
Biggleswade	98.35%	1
Corfe	99.62%	3
Balmoral:	96.00%	2
Windsor:	95.67%	0
Arundel:	97.31%	1
Bamburgh:	98.08%	0
Kendal:	96.79%	0
Warwick:	94.81%	1
Durham:	94.96%	0
York:	96.59%	2
Edinburgh:	99.15%	0
Stirling:	95.65%	0

Congratulations BIGGLESWADE!!
Whole school attendance this week is: 96.91%

What happens next?

Depending on whether you are already known to mental health services and what your needs are at the time of your call, you may be put in contact with:

- Your doctors surgery – A next day doctors appointment maybe be arranged or you might be directly booked into an appointment
- IAPT services (Improving Access to Psychological Therapies) – such as talk services, Talking Change Psychological Services or Steps to Wellbeing
- Your local safe haven – these are places where you can go in the community to receive urgent mental health support
- Voluntary mental health helplines e.g. Young Minds, SHOUT, No Limits, MIND, Kooth, Samaritans, Domestic Violence support, SANI, Bereavement support, drugs and alcohol, debt advice or housing support services
- Your local mental health teams for extra support to meet your needs
- An emergency mental health response.

How to access the service?

Go online at: 111.nhs.uk or



To find out more about the mental health triage team, visit: southernhealth.nhs.uk/help-crisis



Mental Health Triage Team



© Southern Health NHS Foundation Trust, September 2021. Review date: September 2022. SH22124 - Communications and Engagement Team. Designed by NHS Creative - C153703

Who are we?

The mental health triage team are a group of mental health professionals who help and support you with your mental health should you need it. If you live in Hampshire or the Isle of Wight, you can talk to the team by calling 111 or go online at 111.nhs.uk, 24 hours a day, 7 days a week.

What do we do?

The service is open access, which means you can ask for help 24 hours a day and 7 days a week. The team have a wide range of skills to help support your mental health in the best way they can. The mental health triage team can also help access 'Safe Places' in the community for short-term support.

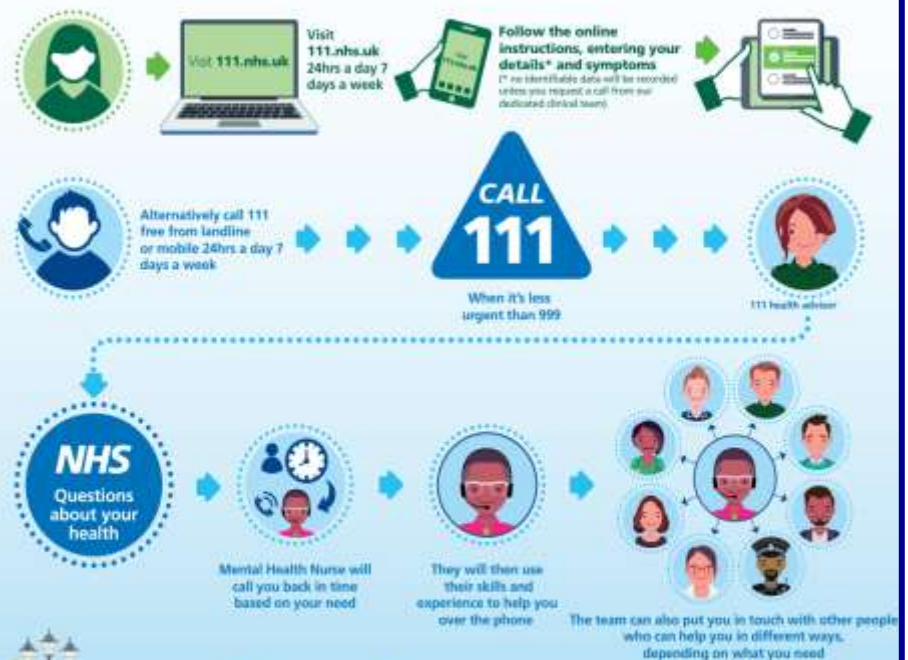
Who do we support?

The mental health triage team are here to support every one of all ages, as long as you live in Hampshire or the Isle of Wight (including Portsmouth and Southampton).

How the service works

When you first call NHS111 a call handler will ask you a series of health questions that will help the mental health triage team make sure they give you the right support and advice.

A mental health nurse will then call you back and have a conversation about your mental health needs. They will then use their skills and experience to help you over the phone or they will put you in contact with different teams who can help to make sure you get the right care at the right time.



FACE COVERINGS

Following Government guidance, a face covering is now required when entering our school building. Please ensure you adhere to this requirement & use a face covering when dropping anything to the office.



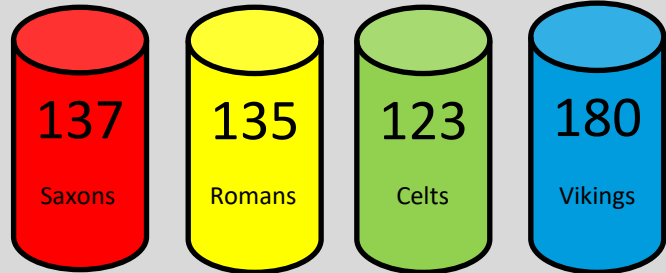
Reading at Home

It is an expectation that all children in Years EYFS – Year 6 should be reading at home at least 3 times a week. Record your reading on the GO READ app.



House Points

Well done to **CELTS** who received the most House Points for this week!



ParentPay is our only method of making payments.



We no longer accept cash at the office. All items that require payment will be available on ParentPay:

- School Dinners
- Enrichment Clubs
- School Trips

Please ensure your account is activated as soon as possible.

Thank you.

WELCOME

A very warm welcome to Amelia, Stephen, Harry who have joined us this term. We hope you enjoy Nine Acres!!

FOODBANK VOUCHERS



We are pleased to announce that we can now provide families with vouchers to the Island's Food Banks. Many families are struggling more than ever with rising household costs and we want to be able to support you however we can. Food Banks support many families across the country and are not just a source of food in a crisis – they can provide a listening ear and signpost you to other agencies who may be able to help if you need it.

Referrals can be made to any of the Island's Food Banks for your convenience or confidentiality. There are currently Food Banks in Newport, Freshwater, Cowes, Ryde and Shanklin. If you would like some more information or are in need of a voucher, please speak to Mrs Hussey.

WESSEX CANCER TRUST

Drive-in Films

for Christmas

At Robin Hill Country Park

Saturday, November 20th	Sunday, November 21st
The Polar Express Gates 11am, Film 12pm	E11 Gates 11am, Film 12pm
How The Grinch Stole Christmas Gates 3pm, Film 4pm	Home Alone Gates 3pm, Film 4pm
Love Actually Gates 7pm, Film 8pm	The Holiday Gates 7pm, Film 8pm

Book today: www.wessexcancer.org.uk/event/xmas-drive-in

Logos: WHITE IRONS, ASCENSOS, ICRTOUCH, Home Hospices, FindUsOnWeb

*Screenings subject to film licenses. Reg. Charity Number: 902018

NEW SCHOOL DINNER MENU - MONDAY 1st NOVEMBER - TUESDAY 21st DECEMBER 2021

Please see below the menus for Autumn Term 2. These menus will work on a rotational basis beginning with Week 1 on Monday 1st November 2021

A reminder that School Dinners are £2.15 for years 3 and above.

Week 1 Autumn Winter 2021 Menu

	Monday	Tuesday	Wednesday	Thursday	Friday
Hot Main Dish	Chinese Veggie Noodles	Allegra's Chicken Filo Pie with Mashed Potato Light filo pastry, hearty chicken centre	Roast Gammon with Roast Potatoes and Gravy Succulent roast gammon with fluffy roasties and tasty gravy	Beef Meatballs in Tomato Sauce** With Rice	Golden Fish Fingers and Chips Crispy Fish Fingers and scrummy chips
Alternative Dish	Cheese and tomato Pizza	The Incredible Burger with Potato Wedges	Sweet Potato and Chickpea Roast with Roast Potatoes and Gravy (V) A chunky sweet potato and chickpea roast	Quorn Hot Dog (V) with Potato Wedges	Quorn Dippers and Chips (V) Crispy Quorn nuggets with their fav sauce - ketchup
Third Choice					
Vegetables	Green Beans Sweetcorn	Peas Broccoli	Carrots Cabbage	Broccoli Sweetcorn	Baked Beans Peas
Desserts	Crispy snow bar	Secret Brownie	Shortbread Biscuit with Fruit Slices*	Pineapple Upside-Down Cake * with Custard	Orange, Sultans & Carrot Slice
Cool Water, Fresh Fruit, Freshly Baked Bread and Yoghurt available daily *Fruit Based **Wholegrain ***Oily Fish (V) Vegetarian					

WEEK 1
MENU
DATES

1/11

15/11

29/11

13/12

Week 2 Autumn Winter 2021 Menu

	Monday	Tuesday	Wednesday	Thursday	Friday
Hot Main Dish	Cheese and Tomato Pizza ** with Dough Balls (V) Cheesy Tomato Topped Pizza Slice	Pork Sausage and Mash with Gravy Fluffy mash with traditional pork sausages and rich gravy	Roast Chicken with Roast Potatoes and Gravy Succulent roast chicken with fluffy roasties and tasty gravy	Lasagne with a Garlic & Herb Bread Wedge A classic Italian layered pasta dish with beef mince	Golden Fish Fingers and Chips Crispy Fish Fingers and scrummy chips
Alternative Dish	Veggie Bolognese ** (V) Penne pasta in a yummy vegetarian mince and tomato sauce	The Incredible Burger with Potato Wedges (V)	Creamy Vegetable Pie with Roast Potatoes and Gravy (V) Creamy vegetable pie with a cheesy shortcrust topper	Veggie Balls in Tomato Sauce with Pasta** (V)	Quorn Dippers and Chips (V) Crispy Quorn nuggets with their fav sauce - ketchup
Vegetables	Carrot Sticks Cucumber Sticks	Peas Broccoli	Carrots Cabbage	Green Beans Sweetcorn	Baked Beans Peas
Desserts	Flapjack with Fruit Slices*	Peach Shortbread Pudding* & Custard	Raspberry yoghurt cake	Fruity Chocolate Brownie	Chocolate Shortbread
Cool Water, Fresh Fruit, Freshly Baked Bread and Yoghurt available daily *Fruit Based **Wholegrain ***Oily Fish (V) Vegetarian					

WEEK 2
MENU
DATES

8/11

22/11

6/12

20/12

Diary Dates 2021/2022



Fri 12th Nov 2021 - DEVELOPMENT DAY

Fri 19th Nov 2021 - Year 3 Butser Farm Trip.

Thurs 25th Nov 2021 - Year 4 Mayflower Theatre Trip.

Fri 10th Dec 2021 - Year 5/6 Mayflower Theatre Trip.

Wed 22nd Dec - Mon 3rd Jan 2022 - CHRISTMAS HOLIDAYS.

Mon 21st Feb - Fri 25th Feb 2022 - HALF TERM.

Thurs 5th March 2022 - Year 1 Marwell Zoo Trip.

Mon 11th April - Fri 22nd April 2022 - EASTER BREAK.

Mon 30th May - Fri 3rd June 2022 - HALF TERM.

Fri 17th June 2022 - DEVELOPMENT DAY

Thurs 30th June - Fri 1st July 2022 - Year 6 Leavers Trip.

Thurs 22nd July 2022 - DEVELOPMENT DAY

*New dates will be added - Please check the box for **NEW** to see any added dates.*

Development Days

Monday 31st August 2021

Friday 12th November 2021

Friday 17th June 2022

Friday 22nd July 2022

*** One more Development Day
to book ***



IMPORTANT WEEKEND

CONTACT DETAILS

emergency@nineacrespri.co.uk
office@nineacrespri.co.uk

If your child shows symptoms, please isolate and book a test. To notify the school at the weekend or throughout any holiday period of a positive COVID-19 case please email **BOTH** of the above email addresses.

FOREST SCHOOLS - ARUNDEL & BAMBURGH

Forest Schools for Arundel and Bamburgh Classes begin next week - please see the letters sent home for further details.

Arundel - Wednesday a.m.

Bamburgh - Tuesday a.m.



Are you entitled to Free School Meals?

Are you in receipt of any of the following benefits?

- Income Support (IS).
- Income based Jobseeker's Allowance (IBJSA).
- Income-Related Employment and Support Allowance (IRESA).
- Guaranteed Pension Credit.
- Support under part VI of the Immigration & Asylum Act 1999.
- Universal Credit.
- Child Tax Credit, provided the parent is not entitled to Working Tax Credit and have an annual income, as assessed by HMRC, which does not exceed £16,190.
- Where a parent is entitled to Working Tax Credit run-on (the payment someone receives for a further four weeks after they stop qualifying for Working Tax Credit).

Please complete a Free School Meal form, these are located in the foyer by the school office.

junior parkrun

What is Medina I.O.W

junior parkrun?

It is a 2k event for juniors only (4 to 14 year olds).

When is it?

It is held every Sunday at 9:00am.

Where is it?

The event takes place at Seaclose Park Newport, Fairlee Road, Newport PO30 2QS. See Course page for more details.

What does it cost to join in?

Nothing - it's free! but please register before your first visit. Only ever register with parkrun once. Don't forget to bring a printed copy of your barcode (request a reminder).

How fast do I have to be?

The aim is to have fun. Please come along and join in whatever your pace!

We're friendly!

Every week we grab a post parkrun coffee in a local café - please come and join us!

WEBSITE DETAILS

<https://www.parkrun.org.uk/medina-juniors/>

HELPING HANDS PTA



Pumpkin Carving Contest – Friday 15th October 2021

Thank you to everyone who took part in the pumpkin carving this year! The event raised an incredible £149.00! What an amazing display and congratulations to everyone who took part - especially our winners.



Pre-loved uniform sale

Thank you to everyone who braved the weather to support the pre-loved uniform sale on Monday 1st November. You raised £40.50!

The next sale will be on Monday 10th January, front playground, weather permitting. Clothing with a Nine Acres logo will be £1.00 each and plain items shirts/ trousers/ skirts etc will be 50p. If you have any uniform that your child has grown out of or no longer requires and it is in good condition, please donate it to us via the office.

Christmas Card Designs

As in previous years, we would like to offer you the opportunity to buy Christmas cards, mugs and other products designed by your children. Your child home an order form earlier in the week where you will find a range of products.

If you would like to order any items, please can we ask that the completed order forms and the money (cheques made payable to Helping Hands) are returned to school by Monday 8th November. VITAL INFORMATION - As you complete your order, please make sure that you have checked the spelling of your child's name and edited any errors. Obviously, once the cards and/or mugs are printed it is too late for these mistakes to be rectified.

**With thanks,
Helping Hands**

TRIP PAYMENT DEADLINES

We are very excited to be organising lots of school trips for our children. Please see below the payment deadlines for trips:



Year 3 Butser Farm

Trip - November 2021 Full payment was due by Mon 4th Oct 2021.

Year 4 Mayflower Theatre Trip - November 2021

Deposit by Fri 8th Oct 2021, with full payment due by Fri 5th Nov 2021.

Year 5/6 Mayflower Theatre Trip - Dec 2021

Deposit by Mon 1st Nov 2021, with full payment due by Fri 26th Nov 2021.

Year 1 Marwell Zoo Trip - March 2022

Deposit by Fri 19th Nov 2021, with full payment due by Fri 25th March 2022.

Year 6 Chessington Trip - June/July 2022

Deposit by Sun 31st Oct 2021, with full payment due by Fri 3rd June 2022.



PE DAYS

Week Commencing 8th Nov 2021

All children should come to school in their PE kits on their allocated day.

PE Days for each Year Group

- EYFS - Monday
- Year 1 - Monday
- Year 2 - Friday
- Year 3 - Wednesday
- Year 4 - Thursday
- Year 5 - Thursday
- Year 6 - Tuesday

Please ensure your child has the appropriate PE kit and footwear for PE lessons. Please ensure your child has a water bottle in school everyday.

Please remove all earrings before your child comes to school and ensure that long hair is tied back.



SCHOOL UNIFORM

EYFS - Year 4

Autumn/Spring Term

School Logo White Polo Shirt (Blue for EYFS only)
Navy Blue Jumper/Cardigan with School Logo
Charcoal Grey Trousers or Grey Skirt
Grey or White Plain Ankle Socks
Black Sensible School Shoes - No Boots or Fashion Shoes/
Trainers

Summer Term

School Logo White Polo Shirt (Blue for EYFS only)
Charcoal Grey Shorts or Skirt/Blue Summer Dress
Grey or White Ankle Short Socks
Black Sensible School Shoes - No Boots or Fashion Shoes/
Trainers

Year 5 and Year 6

Autumn/Spring Term

Navy Blue Jumper/Cardigan with School Logo
Plain White Shirt (Long or Short Sleeve)
School Tie
Charcoal Grey Trousers or Skirt
Grey or White Ankle Short Socks
Black Sensible School Shoes - No Boots or Fashion Shoes/
Trainers

Summer Term

Plain White Shirt (Short Sleeve)
School Tie
Charcoal Grey Shorts or Skirt
Grey or White Plain Short Socks
Black Sensible School Shoes - No Boots or Fashion Shoes/
Trainers

PE Kit (All Years)

- Lime Green Logo Polo Shirt
- Navy/Black Shorts
- Trainers
- White Plain Short Ankle Socks
- Navy Blue or Black Tracksuit Bottoms & a Navy hooded top for Sports activities
- Drawstring PE Bag



ENRICHMENT CLUBS

AUTUMN TERM 2 2021

Enrichment Clubs for Autumn Term 2 began on Monday 1st November. There are still a few places available in most of the clubs. If your child would like to join a club please email enrichmentclubs@nineacrespri.co.uk

Clubs running after Half Term.

Monday - Year 3 & 4 Basketball / Year 5 & 6 Football /
Year 2 Cookery Club

Tuesday - Year 4 Drama / Year 5 Tag Rugby /
Year 1 & 2 Football

Wednesday - Year 2 Makaton / Year 5 & 6 Basketball /
Year 3 & 4 Football

Thursday - Year 2 Dance / Year 6 Homework

Friday - Year 6 Skateboarding



Santa Dash

with

 **Mountbatten**

SAVE THE DATE!

SUNDAY 12th DECEMBER

AT VENTNOR BOTANIC GARDENS

Enjoy Mountbatten's Christmas themed family fun run with...
Christmas Village | Festive Fancy Dress | Santa Appearance
Local Christmas Gifts | Free Entry to the gardens
Chance to win tickets to Robin Hill's POLAR, VIP tickets to
Beauty and the Beast Pantomime and many many more.

FAMILY FUN TO
SUPPORT MOUNTBATTEN



Set in the beautiful harbour side town of Yarmouth offering traditional charm and a festive welcome.
We are proud to present our Christmas on Ice!

11-22 DECEMBER

All profits going to Isle of Wight charities

11th - 22nd December

All weather skating on the latest technology synthetic ice in our Christmas marquee

(See website for opening times & booking)

Music, lights and snow for a magical experience

18th & 22nd December

Discover hidden treasures with late night shopping in Yarmouth's unique independent stores

Meet Mother and Father Christmas at their secret weekend hideaway in Yarmouth Town Hall

18th December at 6pm

Come and join us for Carols in the Square with the Salvation Army



SPONSORED BY

HARVEY NICHOLSON HARVEY NICHOLSON ON THE BEACHS OVER THE BRIDGE SOUTH VIEW BELLEFLORE THE SQUARE WOODLAND BEACH CLUB THE SQUARE WOODLAND BEACH CLUB THE SQUARE WOODLAND BEACH CLUB THE SQUARE WOODLAND BEACH CLUB

FOR MORE INFORMATION VISIT
www.YARMOUTHonICE.com

DESIGNED BY LILY LEE DESIGN



Interested in cricket?

NEW Junior Winter All Stars /Dynamos Cricket Session



The Isle of Wight Cricket Board are delivering cricket coaching for pupils in Year 3,4 & 5.

WHERE: Every Wednesday at Barton Primary starting 10th November
Every Friday at Ryde Private School Sports Hall starting 12th November.

TIME: 5.00pm – 6.00pm at Barton and 5.30-6.30 at Ryde School

Cost: £18 for the 6 weeks



The coaching will be delivered by the Isle of wight County Coaches who are ECB qualified, and DBS checked, **BOOKING is ESSENTIAL.**

**To book your place please contact:
Andrew Jasper on 0791762780 or andrewjasper@live.co.uk**