

NINE ACRES NEWS

'Striving for Excellence'

Friday 6th December 2024

Nine Acres Community Primary School, South View, Newport, Isle of Wight, PO30 1QP
www.nineacrespri.iow.sch.uk 01983 522984 Head teacher: Mrs E. Dyer BA Hons QTS, NPQH



Dear Families of Nine Acres,

Thank you so much for your generous donations for our Christmas Market next Friday! What a wonderful community we have here at Nine Acres, and the Christmas spirit is truly in the air.

This afternoon, our lucky children enjoyed their Snow Globe Experience treat. It was an absolute delight to hear their giggles and see the joy on their faces – such a magical moment!

Our Christmas Market is shaping up to be another legendary event in the Nine Acres calendar. With festive stalls, treats, and plenty of fun, it promises to be a wonderful way to kick off the season.

Just a polite reminder: due to limited space in the school, we cannot accommodate buggies or pushchairs inside the event. A buggy park will be provided outside, but please note this is used at your own risk, and the school cannot take responsibility for any loss or damage. Additionally, we kindly ask that families refrain from using the staff car park during the event, as staff will be coming and going to support activities.

Thank you for your understanding and continued support. We can't wait to see you all next Friday to celebrate the magic of Christmas together!

Have a lovely weekend,
Mrs Dyer



PE UNIFORM REMINDER

When you chose Nine Acres Primary for your child you also chose to adhere to the Nine Acres Uniform Policy including PE.

Therefore, a reminder:

- All children must wear the Nine Acres PE top.
- All children must have suitable trainers.
- PE Hoodies are for PE only.
- Children must have a Nine Acres jumper for other days.
- Children must have blue or Black jogging bottoms.

If you need any support in ensuring your child has the right uniform, we are here to help.



Development Days

Monday 2nd September 2024 - DEVELOPMENT DAY

Friday 20th June 2025 - DEVELOPMENT DAY

Friday 4th July 2025 - DEVELOPMENT DAY

Monday 28th July 2025 -

DEVELOPMENT DAY

Tuesday 29th July 2025 -

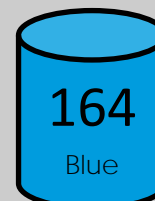
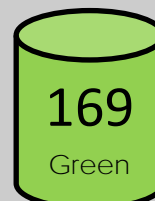
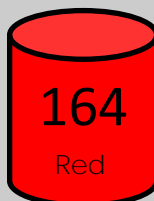
DEVELOPMENT DAY



House Points Totals

Well done to **YELLOW** house who received the most House Points for this week!

CONGRATULATIONS!!!



Ch r i s t m a s a t N i n e A c r e s

Join us on our Community Christmas countdown.....

Friday 13th December 2024 - Nine Acres Christmas Market

Get ready for the magic of Christmas to sparkle at our Nine Acres Christmas Market, organised by our wonderful Helping Hands Team, on Friday 13th December, 3:30–5:00pm. Come along and browse for gifts, enjoy a hot chocolate and mince pie, and soak up the festive spirit.

To ensure everyone has a safe and enjoyable time, please note:

- Entry will be via the front playground only.
- Due to limited space, we kindly request no pushchairs or buggies. A buggy park will be available.

All money raised will go directly towards benefiting our children – so come along and support this event! Reminder this is a cash only event.

Tuesday 17th December & Wednesday 18th December 2024 - EYFS Nativities

Our youngest children have been starting to build their confidence with their performance 'The Wiggly Nativity'. You're warmly invited to join us on Tuesday 17th December (2:00pm start) and again on Wednesday 18th December (10:00am start).

To ensure everyone is seated and settled, please:

- Arrive no earlier than 1:45pm for the Tuesday performance.
- Arrive no earlier than 9:45am for the Wednesday performance.

Tickets are limited to two per family for each performance, with additional tickets available closer to the date if space permits. Children under 3 do not need a ticket but we ask they sit on an adults lap.

Please note - Our EYFS Nativities will take place outside on the front playground due to our high numbers of children so wrap up warm and bring a blanket! Hot Chocolate and shortbread will be available for you to enjoy!

Tickets are on sale from the school office priced at £2.50 per ticket. Tickets are available to purchase by cash only.



Wednesday 18th December & Thursday 19th December 2024 - KS1 Christmas Performances

Prepare to be dazzled! Our KS1 children have been practicing their songs and lines with enthusiasm and festive cheer. You're warmly invited to join us for their play 'Baubles' on Wednesday 18th December 2024 (2:00pm start) and again on Thursday 19th December 2024 (10:00am start).

To ensure everyone is seated and settled, please:

- Arrive no earlier than 1:45pm for the Wednesday performance.
- Arrive no earlier than 9:45am for the Thursday performance.

Tickets are limited to two per family for each performance, with additional tickets available closer to the date if space permits. Children under 3 do not need a ticket but we ask they sit on an adults lap.

Please note - Our Christmas Performances will take place outside on the front playground due to our high numbers of children so wrap up warm and bring a blanket! Hot Chocolate and shortbread will be available for you to enjoy!

Tickets are on sale from the school office priced at £2.50 per ticket. Tickets are available to purchase by cash only.

Thursday 19th December 2024 - Christmas Dinner Day

Our much-loved Christmas Dinner will take place on Thursday 19th December 2024. All children have automatically be signed up for this festive feast (please note there will be no jacket potato option on the day). Thank you to those families who have let us know that their child does not want a Christmas Dinner. Numbers have now been submitted to our kitchen in readiness. Let's get ready to enjoy this seasonal treat together!



Thursday 19th December & Friday 20th December 2024 -
Christmas Festive Wear

We warmly invite our school community to come in wearing their Christmas Jumpers or festive clothing on Thursday 19th December 2024 and again on Friday 20th December 2024. From sequins and sparkles to baubles and bells, we can't wait to see the children spreading holiday cheer with their fabulous outfits! We also have a special visitor taking time out of their very busy Christmas schedule to visit us on Friday 20th December 2024 ... can you guess who it might be?

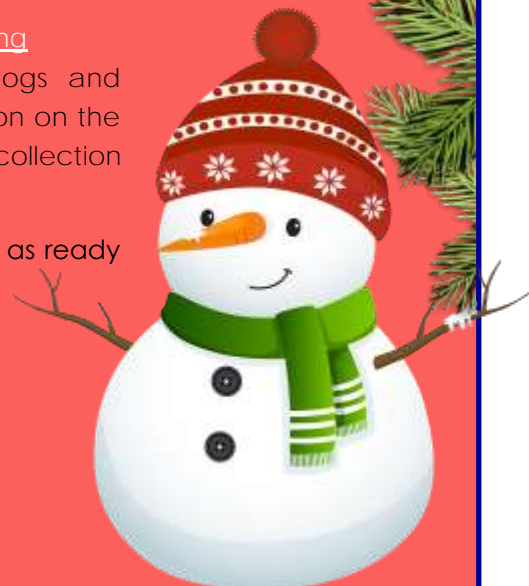
Friday 20th December 2024 - School Dinner Menu & 1.00pm Early Closing

The dinner menu for Friday 20th December 2024 will be Hotdogs and Vegetarian Hotdogs (please note there will be no jacket potato option on the day). All children will finish at 1.00pm on Friday 20th December 2024 - collection will be from usual classroom doors.

We can feel the festive excitement building, and we hope you're just as ready as we are to celebrate this special time of year!

It's beginning to feel a lot like Christmas...

Mrs Dyer
Headteacher



End of Day Procedures

If you have a message regarding your child or someone different to usual will be collecting your child at the end of the school day, please notify the school office by 2.30pm.



You can notify the office by popping in and speaking to a member of the team, by calling 522984 or by emailing office@nineacrespri.co.uk

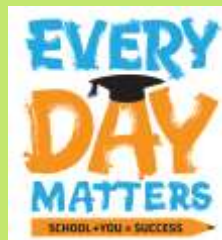
School Attendance

Whole school attendance target 97%.
Dates: 29/11/2024 - 05/12/2024

	Attendance	Lates
Carisbrooke	96.67%	0
Yarmouth	94.33%	0
Biggleswade	96.00%	4
Corfe	96.00%	0
Balmoral:	96.21%	0
Windsor:	98.85%	1
Arundel:	98.62%	0
Bamburgh:	96.00%	1
Kendal:	98.67%	1
Warwick:	97.33%	2
Edinburgh:	87.00%	0
Stirling:	94.67%	2
Durham:	91.67%	5
York:	94.67%	1

Well done WINDSOR!!
Whole school attendance this week is: 95.43%

Good attendance ensures that children can develop at the right pace, gain confidence as they make progress, and ultimately enjoy school as they see themselves succeed.



Our Mental Health Mission Statement

We believe having a mentally healthy community is not about being happy all the time, but about working together through the challenges and sharing the celebrations; feeling supported, heard, accepted, valued and empowered.

This week we want to focus on: 'The importance of getting a good nights sleep!'



Diary Dates 2024/2025



DECEMBER 2024

Tues 10th Dec 2024 - FLU Immunisations.
Fri 13th Dec 2024 - Christmas Market.
NEW Fri 13th Dec 2024 - **YELLOW** House Mufti Day
Tues 17th Dec 2024 - EYFS Nativity PM.
Wed 18th Dec 2024 - EYFS Nativity AM.
Wed 18th Dec 2024 - KS1 Nativity PM.
Thurs 19th Dec 2024 - KS1 Nativity AM.
Thurs 19th Dec 2024 - Christmas Dinner Day.
Thurs 19th Dec 2024 - Christmas Mufti Day.
Fri 20th Dec 2024 - Early closing at 1.00pm.
Mon 23rd Dec - Fri 3rd Jan 2025 - **CHRISTMAS HOLIDAYS.**

JANUARY 2025

Mon 6th Jan 2025 - First day of Spring Term.
Thurs 9th Jan 2025 - Year 2 Spinnaker Tower Trip.

FEBRUARY 2025

Thurs 6th Feb 2025 - EYFS Amazon World Trip.
Thurs 7th Feb 2025 - Year 1 Winchester Theatre Trip.
Mon 17th Feb - Fri 21st Feb 2025 - **FEBRUARY HALF TERM.**

Wed 26th Feb 2025 - Year 5 London Trip.

MARCH 2025

Mon 3rd March 2025 - Parents' Evening.
Wed 5th March 2025 - Parents' Evening.
Thurs 6th March 2025 - WORLD BOOK DAY.

APRIL 2025

Thurs 3rd April 2025 - Year 5 Ventnor Botanic Gardens Trip.
Fri 4th April 2025 - Early closing at 1.00pm
Mon 7th April - Friday 18th April 2025 - **EASTER HOLIDAYS.**

Fri 18th April 2025 - Good Friday.

Mon 21st April 2025 - Bank Holiday - School closed to pupils.

Thurs 24th April 2025 - Year 2 Roald Dahl Trip.

MAY 2025

Mon 5th May 2025 - Bank Holiday - School closed to pupils.

Thurs 8th May 2025 - Year 1 Marwell Zoo Trip.

Mon 12th May 2025 - KS2 SATS WEEK.

Mon 19th May 2025 - KS1 SATS WEEK.

Mon 26th - Fri 30th May 2025 - **MAY HALF TERM.**

JUNE 2025

Week Commencing 2nd June 2025 - Year 4 Multiplication Check.

Thurs 19th June 2025 - Summer Fayre.

Diary Dates 2024/2025 Continued

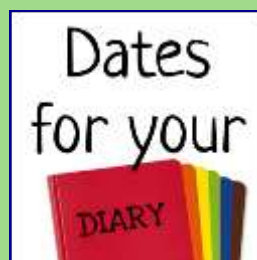
JUNE 2025 CONTINUED

Fri 20th June 2025 - **DEVELOPMENT DAY.**
Wed 25th June 2025 - KS2 Sports Day.
Thurs 26th June 2025 - EYFS & KS1 Sports Day.
Thurs 26th & Fri 27th June 2025 - Year 6 Leavers Trip.

JULY 2025

Fri 4th July 2025 - **DEVELOPMENT DAY.**
Fri 25th July 2025 - Early Closing at 1.00pm.
Mon 28th July 2025 - **DEVELOPMENT DAY.**
Tues 29th July 2025 - **DEVELOPMENT DAY.**
Wed 30th July - Fri 29th August 2025 - **Summer Holidays.**

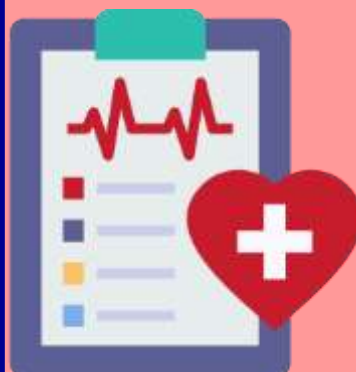
*New dates will be added - Please check the box for **NEW** to see any added dates.*



Asthma Care Plans

If your child has Asthma or is currently being investigated for Asthma you must complete an Asthma Care Plan from the school office. It is essential that we have the correct information to help keep the children safe.

If your child no longer has Asthma, please can you notify us by emailing office@nineacrespri.co.uk so we can update your child's medical record.



It is Parents/Carers' responsibility to ensure they update the school of any current medical conditions.

HELPING HANDS PTA

Nine Acres
Parent/Teacher Association



Asda Cashpot

What a fabulous effort Team Nine Acres! Together we raised a whopping £893.35! Wow!

Diary Dates

Christmas Market - Fri 13th Dec

Christmas Market and Mufti day

As always, we have been completely overwhelmed by the generosity of your donations in preparation for the Christmas Market. I can't believe there is only a week left to go – it is all set to be our biggest and best ever! We will have a variety of craft stalls and lots of old favourites – Santa's Grotto, Chocolate Tombola, Raffle, Teddy tombola, Face Painting to name a few. The return of some new favourites – Decorate a Mug, Name the Elf, Lucky Candy Cane, Bottle Fishing and maybe even some new surprises. Also, there will be cakes and refreshments too – an enormous thank you to Betapak for their incredibly generous donation of tea, coffee, cups and sugar!

Looking forward to seeing you there! **REMEMBER** – please bring lots of change, as it is a **CASH ONLY** event!

Christmas Raffle

Thank you to our local community for the amazing offer of prizes – so far we have donations from... Warhammer, Blackgang Chine, Morrisons, Brighstone Village Shop, Leather and Suede Shop, The Entertainer, The Works, ... Tapnell, Steam Railway, Dunelm, Love Running, Brighstone Landscaping, McDonalds and Red Funnel to go alongside the £100 cash prize, Staff hamper full of Christmas goodies, chocolates, bottles, vouchers and other amazing prizes given by friends and family.

Remember, if you wish to buy tickets, please return the stubs, with the details filled in and the money (£1.00 per ticket) to the office by Thursday 12th December. Tickets are available at the office.

Our next meeting will be on Friday 10th January, 8.45am, meeting in the foyer. If you would like to know more, please contact us via email on helpinghands@nineacrespri.co.uk or leave a message for us at the school office.

Word of the Week

Each week we share a word with you on our newsletter.

Our word this week is '**Blizzard**'.



Boom Reader

Please continue to log your child's reading on the Boom Reader (Go Read) app. It is an expectation that all children in Year 1 to Year 6 should be reading at home at least 3 times a week.



Primary School Admissions 2025

Admissions for Primary School places for September 2025 is currently open. The closing date for Primary School applications is midnight on Wed 15 January 2025.

Date for your diary – The National Offer Day is Wed 16 April 2025.



Educational Visits at Nine Acres

Thursday 9th January 2025

Year 2 Spinnaker Tower Trip.

Deposit Payment was due Friday 11th October 2024

Full payment due by Mon 2nd December 2024



Thursday 6th February 2025

EYFS Amazon World Trip

Deposit Payment due Fri 15th November 2024

Full payment due by Monday 6th January 2025



Friday 7th February 2025

Year 1 Winchester Theatre Trip to see
'Room on the Broom'.

Deposit Payment due Friday 15th November 2024

Full payment due by Monday 6th January 2025



Wednesday 26th February 2025

Year 5 London Trip.

Deposit Payment due Monday 4th Nov 2024

Full payment due by Friday 7th February 2025



Thursday 3rd April 2025

Year 5 Ventnor Botanic Gardens.

Deposit Payment due Monday 6th Jan 2025

Full payment due by Monday 3rd March 2025

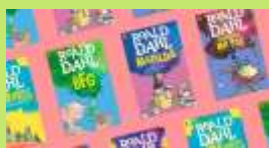


Thursday 24th April 2025

Year 2 Roald Dahl Trip.

Deposit Payment due Monday 6th Jan 2025

Full payment due by Monday 31st March 2025



Thursday 8th May 2025

Year 1 Marwell Zoo Trip.

Deposit Payment due Monday 6th Jan 2025

Full payment due by Monday 4th April 2024



Thursday 26th & Friday 27th June 2025

Year 6 Chessington Leavers Trip.

Deposit Payment due - Monday 4th November 2024

Full payment due by Monday 2nd June 2025



Please ensure deposits and full payments are made on time using ParentPay. Barcodes letters to pay via Paypoint in a local shop are available on request at the office.

FOODBANK VOUCHERS

Many families are struggling more than ever with rising household costs and we want to be able to support you however we can. We continue to provide our families with vouchers to the Island's Food Banks. If you would like some more information or are in need of a voucher, please speak to Mrs Hussey.

Referrals can be made to any of the Island's Food Banks for your convenience or confidentiality. There are currently Food Banks in Newport, Freshwater, Cowes, Ryde and Shanklin.



ARE YOU ENTITLED TO FREE SCHOOL MEALS?

Have your circumstances changed? Could you now be entitled to Free School Meals?

To apply online please go to:

<http://www.iow.gov.uk/schools-and-education/schools/free-school-meals/>

Nine Acres School Car Park

Please do not use the school car park unless you have a Nine Acres School parking permit. We will continue to share the license plates in our newsletters and ask our community to also let us know if they see families using the car park without a school permit.

This is to support us in helping all our dedicated staff get to school on time to teach your children!

New parking permits are available from the school office for Chapel Street car park.

PE Lessons

As the weather continues to remain cold and wet etc, please ensure your child comes to school on their allocated PE day in their warm Nine Acres PE kit. This may include a pair of navy jogging bottoms and a Nine Acres navy hoodie. All PE lessons will be held outside as much as possible therefore a warm kit is essential.

Nine Acres Community Primary School

Spelling Champions of the week

Spelling Champion
in WINDSOR Class
Louie

Spelling Champion in
biggleswade Class
Theo

"Spelling is the building block of communication - let's help our children build strong foundations!"

We encourage families to help their children practice basic spelling at home. Even words such as; like, with, the, was, and has, make a big difference! Checking their spellings in homework is a simple but powerful way to support their learning.

We need your help to ensure every child feels confident in their spelling skills!
Thank you for your continued support.

Autumn/Winter - School Dinner Menu

Chartwells		WEEK 3				
		MONDAY	TUESDAY	WEDNESDAY	THURSDAY	FRIDAY
AUTUMN/WINTER 2024	HOT SPECIALS	Cheese and Tomato Pizza @ Served with Potato Wedges	Pork Sausages Served with Roasted Potatoes and Slings	Roast Chicken Served with Roast Potatoes and Slings	Chicken and Vegetable Korma @ Served with Wholegrain Rice	Fish Fillets Served with Chips
	HOT SPECIALS	BBQ Quorn Fillet @ Served with Wholegrain Rice	Quorn Sausages Served with Roasted Potatoes and Slings	Roasted Vegetable and Cranberry Slings Served with Roast Potatoes and Slings	Tomato and Sweetcorn Pasta @ @	Quorn Dippers @ Served with Chips
	HOT SPECIALS	Jacket Potatoes @ with a choice of hot and cold Slings	Jacket Potatoes @ with a choice of hot and cold Slings	Jacket Potatoes @ with a choice of hot and cold Slings	Jacket Potatoes @ with a choice of hot and cold Slings	Jacket Potatoes @ with a choice of hot and cold Slings
Jacket Potatoes are for Year 3 and above						
All main meals are served with two vegetables						
DESSERTS	Chocolate Shortbread with Fruit @	Bread and Butter Pudding with Custard	Old Cookies with Fruit @	Lemon Shortbread	Vanilla Ice Cream	
AVAILABLE EVERY DAY Vegetarian Dairy Free Fruity Nutritional Choices						

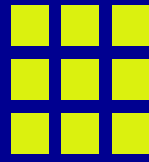
Week Commencing
Monday 9th
December 2024
Week 3

For children in Year 3 and above the school dinner price is £2.70 per meal.

The cost for a weeks dinners is £13.50.



PE DAYS



Nine Acres Primary School

Week Commencing Mon 9th December 2024

All children should come to school in their Nine Acres PE kits on their allocated day.

PE Days for each Year Group

- EYFS - Tuesday
- Year 1 - Monday
- Year 2 - Wednesday
- Year 3 - Thursday
- Year 4 - Tuesday
- Year 5 - Friday
- Year 6 - Monday

Please ensure your child has a warm PE Kit and sensible footwear for PE lessons. All sessions will be held outdoors.

Please ensure your child has a water bottle in school everyday.

Please remove earrings before your child comes to school and ensure that long hair is tied back.



SCHOOL DETAILS

School Telephone
Number

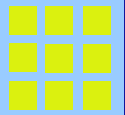
01983 522984

School Office Email

office@nineacrespri.co.uk

School Website

www.nineacrespri.iow.sch.uk



Medical Appointments & Leave of Absence Requests

If your child has a Drs/hospital/ dental appointment, please ensure you have notified the school office of the time and date and handed in a copy of the medical letter or appointment card to the school office.

Leave of absence request forms for are available upon request at the school office. These will only be authorised in exceptional circumstances.



ParentPay is our only method of making payments.

Are you signed up to ParentPay? We no longer accept cash at the office. All items that require payment will be available on

- School Dinners
- Enrichment Clubs
- School Trips



Please ensure your account is activated.

Social Media

Do you follow us on Facebook?

Scan the QR code to see our page!!



We are a Nut Free School!

Please may we remind you that Nine Acres is a nut free school. Nuts and nut products should not be brought into school. Please also refrain from bringing in sesame too.



NINE ACRES PRIMARY SCHOOL UNIFORM

Our Nine Acres Uniform is available from Kids and Co in Ryde. Please ensure your child has the correct uniform and PE kit and sensible black school shoes.

EYFS - Year 4

Autumn/Spring/Summer Term

School Logo White Polo Shirt
(Blue for EYFS only)
Navy Blue Jumper/Cardigan with School Logo

Charcoal Grey Trousers or Grey Skirt
Grey or White Plain Ankle Socks
Black Sensible School Shoes - No Boots or Fashion Shoes/Trainers

Summer Term

School Logo White Polo Shirt (Blue for EYFS only)
Charcoal Grey Shorts or Skirt/Blue Summer Dress
Grey or White Ankle Short Socks
Black Sensible School Shoes - No Boots or Fashion Shoes/Trainers

Year 5 and Year 6

Autumn/Spring/Summer Term

Navy Blue Jumper/Cardigan with School Logo

Plain White Shirt (Long or Short Sleeve)
School Tie

Charcoal Grey Trousers or Skirt
Grey or White Ankle Short Socks
Black Sensible School Shoes - No Boots or Fashion Shoes/Trainers

Summer Term

Plain White Shirt (Short Sleeve)
School Tie
Charcoal Grey Shorts or Skirt
Grey or White Plain Short Socks
Black Sensible School Shoes - No Boots or Fashion Shoes/Trainers

PE Kit (All Years)

Lime Green Logo Polo Shirt
Navy/Black Shorts
Trainers
White Plain Short Ankle Socks
Navy Blue or Black Tracksuit Bottoms & a Navy hooded top for Sports activities
Drawstring PE Bag



School Attendance and Punctuality

Attendance at school plays a significant part in how well your children succeed at school and the chances they have in adult life. It is a requirement that Parents/Carers let us know on each day of any absence and why your child is not at school so please inform us as soon as possible.

A telephone call to the school office is sufficient (522984) or alternatively email office@nineacrespri.co.uk In conjunction with the Local Education Authority (LEA) we operate a system whereby if we do not get a message from you we will try to contact you by text and/or phone. Regular lateness is also monitored. As with attendance, punctuality is most important, it can be very disruptive for your child to arrive late into lessons. If we are concerned in any way about your child's attendance it may be necessary to report to the Education Welfare Service (EWS) for further investigation.



School Trip Permission Forms

With several of our trips due to take place in the new year, please ensure that you have completed and signed the relevant trip permission form for your child's trip. Spare forms can be requested from the school office.

Yellow House Mufti Day

On Friday 13th December it will be Mufti Day for YELLOW House for winning the most house points during Autumn Term 2.

Well done YELLOW House!!

Friday 20th December 2024

Early Closing

Reminder we are closing early on Friday 20th December 2024. All children will be leaving at 1.00pm and collection will be from their usual classroom doors. Any children from Years 4/5/6 with permission to walk home for this academic year will be released at 1.00pm on the 20th December unless you notify the office of anything different by Wednesday 18th Dec. Please either email office@nineacrespri.co.uk or call 522984.